

For Research Use Only

# CoraLite® Plus 647 Anti-Human CD68 (KP1) Rabbit Recombinant Antibody



Catalog Number: **CL647-65515**

## Basic Information

<b>Catalog Number:</b> CL647-65515	<b>GenBank Accession Number:</b> BC015557	<b>Purification Method:</b> Affinity purification
<b>Size:</b> 100tests , 5 µl/test	<b>GeneID (NCBI):</b> 968	<b>CloneNo.:</b> KP1
<b>Source:</b> Rabbit	<b>UNIPROT ID:</b> P34810	<b>Excitation/Emission maxima wavelengths:</b> 654 nm / 674 nm
<b>Isotype:</b> IgG	<b>Full Name:</b> CD68 molecule	
	<b>Calculated MW:</b> 37 kDa	

## Applications

**Tested Applications:**  
FC (Intra)

**Species Specificity:**  
Human

## Background Information

CD68 is a type I transmembrane glycoprotein that is highly expressed by human monocytes and tissue macrophages. It belongs to the lysosomal/endosomal-associated membrane glycoprotein (LAMP) family and primarily localizes to lysosomes and endosomes with a smaller fraction circulating to the cell surface. CD68 is also a member of the scavenger receptor family. It may play a role in phagocytic activities of tissue macrophages.

## Storage

**Storage:**  
Store at 2-8°C. Avoid exposure to light. Stable for one year after shipment.

**Storage Buffer:**  
PBS with 0.09% sodium azide and 0.5% BSA.

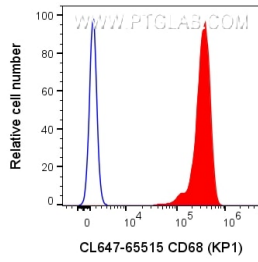
For technical support and original validation data for this product please contact:

T: 1 (888) 4PTGLAB (1-888-478-4522) (toll free in USA), or 1(312) 455-8498 (outside USA)

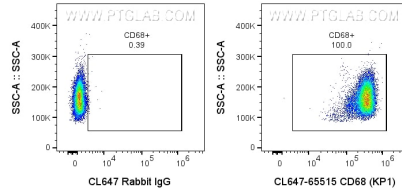
E: [proteintech@ptglab.com](mailto:proteintech@ptglab.com)  
W: [ptglab.com](http://ptglab.com)

**This product is exclusively available under Proteintech Group brand and is not available to purchase from any other manufacturer.**

## Selected Validation Data



$1 \times 10^6$  human PBMCs were intracellularly stained with 5  $\mu$ l CoraLite® Plus 647 Anti-Human CD68 Rabbit Recombinant Antibody (CL647-65515, Clone:KP1) or CoraLite® Plus 647-conjugated Rabbit IgG control PolyAb (CL647-30000). Cells were fixed and permeabilized with Transcription Factor Staining Buffer Kit (PF00011). Cells were treated with FC Receptor Block prior to staining.



$1 \times 10^6$  human PBMCs were intracellularly stained with 5  $\mu$ l CoraLite® Plus 647 Anti-Human CD68 Rabbit Recombinant Antibody (CL647-65515, Clone:KP1) or CoraLite® Plus 647-conjugated Rabbit IgG control PolyAb (CL647-30000). Cells were fixed and permeabilized with Transcription Factor Staining Buffer Kit (PF00011). Cells were treated with FC Receptor Block prior to staining.