

For Research Use Only

# CoraLite® Plus 647 Anti-Human CD86 (BU63) Rabbit Recombinant Antibody



Catalog Number: **CL647-65514**

## Basic Information

Catalog Number: CL647-65514	GenBank Accession Number: BC040261	Purification Method: Affinity purification
Size: 100tests , 5 µl/test	GeneID (NCBI): 942	CloneNo.: BU63
Source: Rabbit	ENSEMBL Gene ID: ENSG00000114013	Excitation/Emission maxima wavelengths: 654 nm / 674 nm
Isotype: IgG	Full Name: CD86 molecule	
	Calculated MW: 329 aa, 38 kDa	

## Applications

Tested Applications:  
FC

Species Specificity:  
Human

## Background Information

CD86 (also known as B7-2) is a costimulatory molecule belonging to the immunoglobulin superfamily. Primarily expressed on antigen-presenting cells (APCs), including B cells, dendritic cells, and macrophages, CD86 is the ligand for two proteins at the cell surface of T cells, CD28 antigen and CTLA-4. Binding of CD86 with CD28 antigen is a costimulatory signal for activation of the T-cell. Binding of CD86 with CTLA-4 negatively regulates T-cell activation and diminishes the immune response. (PMID: 7513726; 1847722; 11029388; 27591335)

## Storage

Storage:  
Store at 2-8°C. Avoid exposure to light. Stable for one year after shipment.  
Storage Buffer:  
PBS with 0.09% sodium azide and 0.5% BSA.

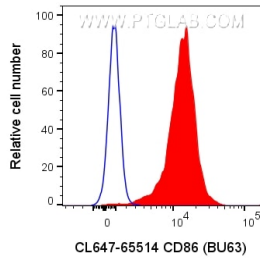
For technical support and original validation data for this product please contact:

T: 1 (888) 4PTGLAB (1-888-478-4522) (toll free  
in USA), or 1(312) 455-8498 (outside USA)

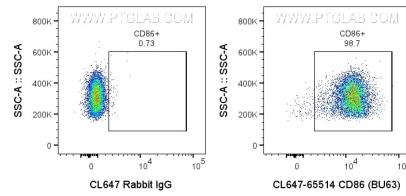
E: [proteintech@ptglab.com](mailto:proteintech@ptglab.com)  
W: [ptglab.com](http://ptglab.com)

**This product is exclusively available under Proteintech Group brand and is not available to purchase from any other manufacturer.**

## Selected Validation Data



1x10<sup>6</sup> human PBMCs were surface stained with 5 ul CoraLite® Plus 647 Anti-Human CD86 Rabbit Recombinant Antibody (CL647-65514, Clone:BU63) or CoraLite® Plus 647-conjugated Rabbit IgG control PolyAb (CL647-30000). Cells were not fixed. Cells were treated with FC Receptor Block prior to staining. Monocytes were gated.



1x10<sup>6</sup> human PBMCs were surface stained with 5 ul CoraLite® Plus 647 Anti-Human CD86 Rabbit Recombinant Antibody (CL647-65514, Clone:BU63) or CoraLite® Plus 647-conjugated Rabbit IgG control PolyAb (CL647-30000). Cells were not fixed. Cells were treated with FC Receptor Block prior to staining. Monocytes were gated.