

For Research Use Only



# CoraLite® Plus 647 Anti-Human CD8a (OKT8) Rabbit Recombinant Antibody

Catalog Number: **CL647-65506**

## Basic Information

|                                       |  |   |
|---------------------------------------|--|---|
| <b>Catalog Number:</b><br>CL647-65506 | <b>GenBank Accession Number:</b><br>BC025715 | <b>Purification Method:</b><br>Affinity purification              |
| <b>Size:</b><br>100tests, 5 µl/test   | <b>GeneID (NCBI):</b><br>925                 | <b>CloneNo.:</b><br>OKT8  |
| <b>Source:</b><br>Rabbit              | <b>ENSEMBL Gene ID:</b><br>ENSG00000153563   | <b>Excitation/Emission maxima wavelengths:</b><br>654 nm / 674 nm |
| <b>Isotype:</b><br>IgG                | <b>Full Name:</b><br>CD8a molecule           |   |
|                                       | <b>Calculated MW:</b><br>235 aa, 26 kDa      |   |

## Applications

**Tested Applications:**  
FC

**Species Specificity:**  
Human

## Background Information

CD8 is a transmembrane glycoprotein composed of two disulfide-linked chains. It can be present as a homodimer of CD8a or as a heterodimer of CD8a and CD8β (PMID: 3264320; 8253791). CD8 is found on most thymocytes. The majority of class I-restricted T cells express mostly the CD8aβ heterodimer while CD8aa homodimers alone have been found on some gut intraepithelial T cells, on some T cell receptor (TCR) γδ T cells and on NK cells (PMID: 2111591; 1831127; 8420975). CD8 acts as a co-receptor that binds to MHC class-I and participates in cytotoxic T-cell activation (PMID: 8499079). During T cell development, CD8 is required for positive selection of CD4-/CD8+ T cells (PMID: 1968084).

## Storage

**Storage:**  
Store at 2-8°C. Avoid exposure to light. Stable for one year after shipment.  
**Storage Buffer:**  
PBS with 0.09% sodium azide and 0.5% BSA.

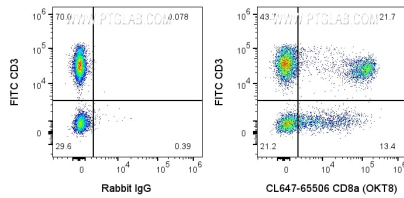
For technical support and original validation data for this product please contact:

T: 1 (888) 4PTGLAB (1-888-478-4522) (toll free in USA), or 1(312) 455-8498 (outside USA)

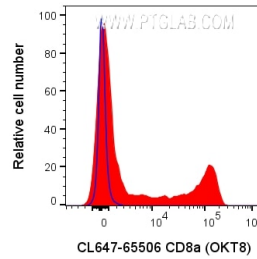
E: [proteintech@ptglab.com](mailto:proteintech@ptglab.com)  
W: [ptglab.com](http://ptglab.com)

**This product is exclusively available under Proteintech Group brand and is not available to purchase from any other manufacturer.**

## Selected Validation Data



1x10<sup>6</sup> human PBMCs were surface stained with FITC Anti-Human CD3 and 5 ul CoraLite® Plus 647 Anti-Human CD8a Rabbit Recombinant Antibody (CL647-65506, Clone:OKT8) or CoraLite® Plus 647-conjugated Rabbit IgG control PolyAb (CL647-30000). Cells were not fixed. Lymphocytes were gated.



1x10<sup>6</sup> human PBMCs were surface stained with 5 ul CoraLite® Plus 647 Anti-Human CD8a Rabbit Recombinant Antibody (CL647-65506, Clone:OKT8) or CoraLite® Plus 647-conjugated Rabbit IgG control PolyAb (CL647-30000). Cells were not fixed. Lymphocytes were gated.