

For Research Use Only

CoraLite®647 Rat IgG2b Isotype Control (LTF-2)



Catalog Number:CL647-65211

Basic Information

Catalog Number: CL647-65211	GenBank Accession Number: GeneID (NCBI):	Purification Method: Affinity purification
Size: 100ug, 0.5 mg/mL	Full Name:	CloneNo.: LTF-2
Source: Rat		Excitation/Emission maxima wavelengths: 650 nm / 665 nm
Isotype: IgG2b		

Applications

Tested Applications:
FC
Species Specificity:

Background Information

The LTF-2 immunoglobulin is useful as an isotype-matched control. The LTF-2 immunoglobulin has an unknown binding specificity and is used as an isotype control for rat IgG2b antibodies. This antibody has been quality-tested for flow cytometry as negative control.

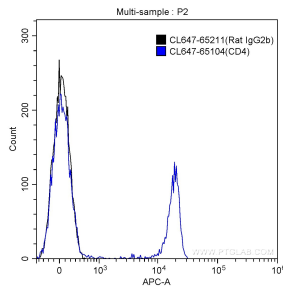
Storage

Storage:
Store at 2-8°C. Avoid exposure to light.
Storage Buffer:
PBS with 0.1% sodium azide and 0.5% BSA, pH 7.3.

For technical support and original validation data for this product please contact:
T: 1 (888) 4PTGLAB (1-888-478-4522) (toll free in USA), or 1(312) 455-8498 (outside USA) E: proteintech@ptglab.com
W: ptglab.com

This product is exclusively available under Proteintech Group brand and is not available to purchase from any other manufacturer.

Selected Validation Data



1X10⁶ mouse splenocytes were surface stained with CoraLite®647-conjugated Rat IgG2b Isotype Control (CL647-65211, Clone: LTF-2) (black) or CoraLite®647-conjugated Anti-Mouse CD4 (CL647-65104, Clone: GK1.5) (blue). Cells were not fixed.