

For Research Use Only

CoraLite® Plus 647 Anti-Human CD68 (KP1)



Catalog Number:CL647-65202

Basic Information

| | | |
|---------------------------------------|--|---|
| Catalog Number: CL647-65202 | GenBank Accession Number: BC015557 | Purification Method: Protein G purification |
| Size: 100tests , 5 µl/test | GeneID (NCBI): 968 | CloneNo.: KP1 |
| Source: Mouse | Full Name: CD68 molecule | Excitation/Emission maxima wavelengths: 654 nm / 674 nm |
| Isotype: IgG1, kappa | Calculated MW: 37 kDa | |

Applications

Tested Applications:
FC (Intra)

Species Specificity:
Human

Background Information

CD68 is a type I transmembrane glycoprotein that is highly expressed by human monocytes and tissue macrophages. It belongs to the lysosomal/endosomal-associated membrane glycoprotein (LAMP) family and primarily localizes to lysosomes and endosomes with a smaller fraction circulating to the cell surface. CD68 is also a member of the scavenger receptor family. It may play a role in phagocytic activities of tissue macrophages.

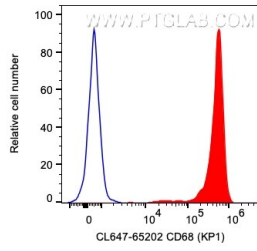
Storage

Storage:
Store at 2-8°C. Avoid exposure to light. Stable for one year after shipment.
Storage Buffer:
PBS with 0.1% sodium azide and 0.5% BSA, pH 7.3.

For technical support and original validation data for this product please contact:
T: 1 (888) 4PTGLAB (1-888-478-4522) (toll free in USA), or 1(312) 455-8498 (outside USA) E: proteintech@ptglab.com
W: ptglab.com

This product is exclusively available under Proteintech Group brand and is not available to purchase from any other manufacturer.

Selected Validation Data



1X10⁶ human PBMCs were intracellularly stained with 5 ul CoraLite® Plus 647 Anti-Human CD68 (CL647-65202, Clone: KP1), or Mouse IgG1 Isotype Control. Cells were fixed and permeabilized with Transcription Factor Staining Buffer. Monocytes were gated.