

For Research Use Only

# CoraLite® Plus 647 Anti-Human CD163 (GHI/61)



Catalog Number: CL647-65169

## Basic Information

<b>Catalog Number:</b> CL647-65169	<b>GenBank Accession Number:</b> BC051281	<b>Purification Method:</b> Protein G purification
<b>Size:</b> 100tests , 5 µl/test	<b>GeneID (NCBI):</b> 9332	<b>CloneNo.:</b> GHI/61
<b>Source:</b> Mouse	<b>Full Name:</b> CD163 molecule	<b>Excitation/Emission maxima wavelengths:</b> 650 nm / 665 nm
<b>Isotype:</b> IgG1, kappa	<b>Calculated MW:</b> 1156 aa, 125 kDa	

## Applications

**Tested Applications:**  
FC

**Species Specificity:**  
Human

## Background Information

CD163, also known as M130, is a membrane glycoprotein which belongs to the scavenger receptor superfamily (PMID: 8370408). It is an acute phase-regulated and signal-inducing macrophage protein expressed exclusively in monocytes and tissue macrophages (PMID: 11196644). CD163 mediates endocytosis of haptoglobin-haemoglobin complexes (PMID: 11196644). The uptake of haptoglobin by macrophages contributes to the recycling of iron and also to the inflammatory response (PMID: 22900885). Soluble CD163 (sCD163), as a result of ectodomain shedding during inflammatory activation of macrophages, circulates in blood and has been suggested as a plasma/serum marker for macrophage activity (PMID: 12570164).

## Storage

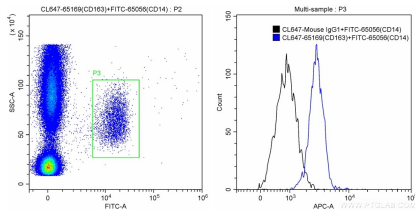
**Storage:**  
Store at 2-8°C. Avoid exposure to light. Stable for one year after shipment.

**Storage Buffer:**  
PBS with 0.1% sodium azide and 0.5% BSA, pH 7.3.

For technical support and original validation data for this product please contact:  
T: 1 (888) 4PTGLAB (1-888-478-4522) (toll free in USA), or 1(312) 455-8498 (outside USA)      E: proteintech@ptglab.com  
W: ptglab.com

This product is exclusively available under Proteintech Group brand and is not available to purchase from any other manufacturer.

## Selected Validation Data



100 ul human peripheral blood were surface stained with 10 ul FITC-Anti-Human CD14 (FITC-65056, Clone: UCHM-1), and 5 ul CoraLite® Plus 647-conjugated Anti-Human CD163 (CL647-65169, Clone: GH1/61) or CoraLite® Plus 647-conjugated Mouse IgG1 isotype control. Cells were then treated with red blood cell lysis buffer and were gated for CD14+ monocytes for analysis of CD163 staining. Cells were not fixed.