

For Research Use Only

# CoraLite® Plus 647-conjugated ATP1A1-Specific Polyclonal antibody

Catalog Number:CL647-55187

Featured Product



## Basic Information

**Catalog Number:**

CL647-55187

**Size:**

100ul , Concentration: 1000 ug/ml by 476

Nanodrop;

**Source:**

Rabbit

**Isotype:**

IgG

**GenBank Accession Number:**

NM\_000701

**GeneID (NCBI):**

476

**ENSEMBL Gene ID:**

ENSG00000163399

**UNIPROT ID:**

P05023

**Full Name:**

ATPase, Na<sup>+</sup>/K<sup>+</sup> transporting, alpha 1 polypeptide

**Calculated MW:**

113 kDa

**Observed MW:**

100-110 kDa

**Purification Method:**

Antigen affinity purification

**Recommended Dilutions:**

IF/ICC 1:50-1:500

**Excitation/Emission maxima wavelengths:**

654 nm / 674 nm

## Applications

**Tested Applications:**

IF/ICC

**Species Specificity:**

human, mouse

**Positive Controls:**

IF/ICC : HEK-293 cells,

## Background Information

ATP1A1 is the catalytic component of Na<sup>+</sup>/K<sup>+</sup>-ATPase which is a membrane bound enzyme primarily involved in generation of Na<sup>+</sup> and K<sup>+</sup> gradients across plasma membranes and in determination of cytoplasmic Na<sup>+</sup> levels. ATP1A1 is a ubiquitously expressed membrane protein and often used as the marker or internal control for plasma membrane protein. This antibody is specific to ATP1A1.

## Storage

**Storage:**

Store at -20°C. Avoid exposure to light. Stable for one year after shipment.

**Storage Buffer:**

PBS with 50% Glycerol, 0.05% Proclin300, 0.5% BSA, pH 7.3.

Aliquoting is unnecessary for -20°C storage

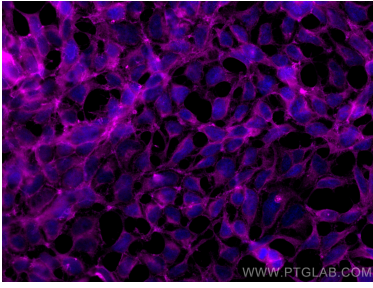
For technical support and original validation data for this product please contact:

T: 1 (888) 4PTGLAB (1-888-478-4522) (toll free in USA), or 1(312) 455-8498 (outside USA)

E: [proteintech@ptglab.com](mailto:proteintech@ptglab.com)  
W: [ptglab.com](http://ptglab.com)

This product is exclusively available under Proteintech Group brand and is not available to purchase from any other manufacturer.

## Selected Validation Data



Immunofluorescent analysis of (-20°C Ethanol) fixed HEK-293 cells using CoraLite® Plus 647 ATP1A1-Specific antibody (CL647-55187) at dilution of 1:200.