

For Research Use Only

# CoraLite® Plus 647-conjugated TMEM119 Polyclonal antibody

Catalog Number:CL647-27585



## Basic Information

Catalog Number:

CL647-27585

Size:

100ul , Concentration: 1000 µg/ml by  
Nanodrop;

Source:

Rabbit

Isotype:

IgG

Immunogen Catalog Number:

AG26269

GenBank Accession Number:

NM\_181724

GeneID (NCBI):

338773

UNIPROT ID:

Q4V9L6

Full Name:

transmembrane protein 119

Calculated MW:

29 kDa

Observed MW:

45 kDa

Purification Method:

Antigen affinity purification

Recommended Dilutions:

IF-P 1:50-1:500

Excitation/Emission maxima  
wavelengths:

654 nm / 674 nm

## Applications

Tested Applications:

IF-P, FC (Intra)

Species Specificity:

human, mouse

Positive Controls:

IF-P: mouse liver tissue,

## Background Information

TMEM119 immunohistochemistry might provide a useful tool for investigating the biology and pathology of human microglia (PMID: 26250788). Microglia can be detected clearly using Catalog#27585-1-AP. The predicted MW of TMEM119 is 29 kDa. Catalog#27585-1-AP recognizes 45-50 kDa band may due to glycosylation..

## Storage

Storage:

Store at -20°C. Avoid exposure to light. Stable for one year after shipment.

Storage Buffer:

PBS with 50% Glycerol, 0.05% Proclin300, 0.5% BSA, pH 7.3.

Aliquoting is unnecessary for -20°C storage

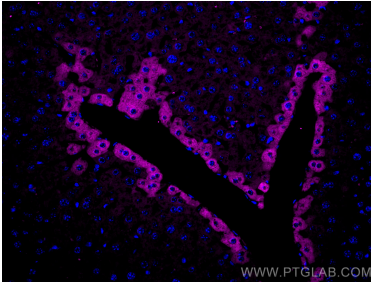
For technical support and original validation data for this product please contact:

T: 1 (888) 4PTGLAB (1-888-478-4522) (toll free  
in USA), or 1(312) 455-8498 (outside USA)

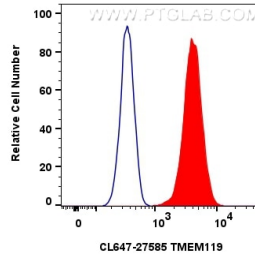
E: [proteintech@ptglab.com](mailto:proteintech@ptglab.com)  
W: [ptglab.com](http://ptglab.com)

This product is exclusively available under Proteintech Group brand and is not available to purchase from any other manufacturer.

## Selected Validation Data



Immunofluorescent analysis of (4% PFA) fixed paraffin-embedded mouse liver tissue using CoraLite® Plus 647 TMEM119 antibody (CL647-27585) at dilution of 1:200. Heat mediated antigen retrieval with Tris-EDTA buffer (pH 9.0).



1x10<sup>6</sup> HEK-293 cells were intracellularly stained with 0.4 ug CoraLite® Plus 647-conjugated TMEM119 Polyclonal antibody (CL647-27585)(red), or 0.4 ug CoraLite® Plus 647-conjugated Rabbit IgG control Rabbit PolyAb (CL647-30000) (blue). Cells were fixed with 4% PFA and permeabilized with Flow Cytometry Perm Buffer (PF00011-C).