

For Research Use Only

CoraLite®594 Anti-Human ICAM-2/CD102 Rabbit Recombinant Antibody

Catalog Number:CL594-98367



Basic Information

Catalog Number:

CL594-98367

Size:

100tests , 5 ul/test

Source:

Rabbit

Isotype:

IgG

Immunogen Catalog Number:

EG2002

GenBank Accession Number:

NM_001099789.2

GeneID (NCBI):

3384

UNIPROT ID:

P13598

Full Name:

intercellular adhesion molecule 2

Calculated MW:

31kDa

Purification Method:

Protein A purification

CloneNo.:

242237F8

Recommended Dilutions:

FC: 5 ul per 10⁶ cells in a 100 µl suspension

Excitation/Emission maxima wavelengths:

588 nm / 604 nm

Applications

Tested Applications:

FC

Species Specificity:

human

Positive Controls:

FC : human PBMCs,

Background Information

ICAM2 is a cell adhesion protein having important roles in cell migration, especially during inflammation when leukocytes cross the endothelium. Initially described as a receptor for lymphocyte function-associated antigen-1 (LFA1), ICAM2 may play a role in lymphocyte recirculation by blocking LFA-1-dependent cell adhesion. It mediates adhesive interactions important for antigen-specific immune response, NK-cell mediated clearance, lymphocyte recirculation, and other cellular interactions important for immune response and surveillance.

Storage

Storage:

Store at 2-8°C. Avoid exposure to light. Stable for one year after shipment.

Storage Buffer:

PBS with 0.09% sodium azide and 0.5% BSA, pH7.3

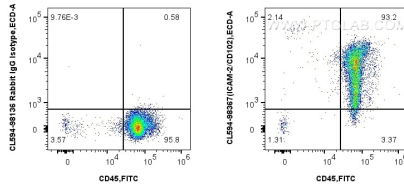
For technical support and original validation data for this product please contact:

T: 1 (888) 4PTGLAB (1-888-478-4522) (toll free in USA), or 1(312) 455-8498 (outside USA)

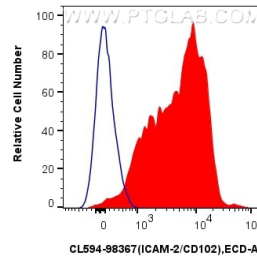
E: proteintech@ptglab.com
W: ptglab.com

This product is exclusively available under Proteintech Group brand and is not available to purchase from any other manufacturer.

Selected Validation Data



1x10⁶ human PBMCs were surface stained with FITC Plus Anti-Human CD45, and 5 ul CoraLite®594 Anti-Human ICAM-2/CD102 Rabbit RecAb (CL594-98367, Clone: 242237F8) or CoraLite®594 Rabbit IgG Isotype Control RecAb (CL594-98136, Clone: 240953C9). Cells were incubated with FC Receptor Block prior to staining. Cells were not fixed.



1x10⁶ human PBMCs were surface stained with 5 ul CoraLite®594 Anti-Human ICAM-2/CD102 Rabbit RecAb (CL594-98367, Clone: 242237F8) (red) or CoraLite®594 Rabbit IgG Isotype Control RecAb (CL594-98136, Clone: 240953C9) (blue). Cells were incubated with FC Receptor Block prior to staining. Cells were not fixed.