

For Research Use Only

# CoraLite®594 Anti-Human DDR1/CD167a Rabbit Recombinant Antibody

Catalog Number:CL594-98200



## Basic Information

**Catalog Number:**

CL594-98200

**Size:**

100tests , 5 ul/test

**Source:**

Rabbit

**Isotype:**

IgG

**GenBank Accession Number:**

NM\_001297654.2

**GeneID (NCBI):**

780

**UNIPROT ID:**

Q08345-1

**Full Name:**

discoidin domain receptor tyrosine kinase 1

**Calculated MW:**

101kDa

**Purification Method:**

Protein A purification

**CloneNo.:**

241796D6

**Excitation/Emission maxima wavelengths:**

588 nm / 604 nm

## Applications

**Tested Applications:**

FC

**Species Specificity:**

human

## Background Information

DDR1, or CD167a, is a member of the receptor tyrosine kinase (RTK) family, which plays a significant role in various cellular processes including cell proliferation, adhesion, migration, and extracellular matrix (ECM) remodeling. DDR1 is known for its unique discoidin domain that allows it to bind specifically to certain collagens, initiating downstream signaling pathways that can lead to cell transformation and tumor progression. Abnormal activation of DDR1 is closely associated with the development of various solid tumors, and it has been shown that DDR1 can prevent immune cells from infiltrating triple-negative breast cancer (TNBC) and eliminate tumor cells.

## Storage

**Storage:**

Store at 2-8°C. Avoid exposure to light. Stable for one year after shipment.

**Storage Buffer:**

PBS with 0.09% sodium azide and 0.5% BSA.

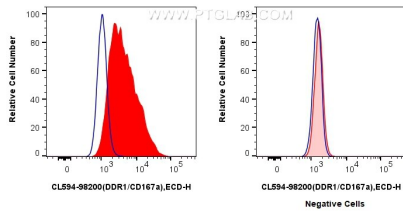
For technical support and original validation data for this product please contact:

T: 1 (888) 4PTGLAB (1-888-478-4522) (toll free in USA), or 1(312) 455-8498 (outside USA)

E: [proteintech@ptglab.com](mailto:proteintech@ptglab.com)  
W: [ptglab.com](http://ptglab.com)

**This product is exclusively available under Proteintech Group brand and is not available to purchase from any other manufacturer.**

## Selected Validation Data



1x10<sup>6</sup> MCF-7 cells (left) or HeLa cells (right) were surface stained with 5 ul CoraLite®594 Anti-Human DDR1/CD167a Rabbit RecAb (CL594-98200, Clone: 241796D6) (red) or CoraLite®594 Rabbit IgG Isotype Control RecAb (CL594-98136, Clone: 240953C9) (blue). Cells were not fixed.