

For Research Use Only

# CoraLite®594 Anti-Mouse Neutrophil elastase Rabbit Recombinant Antibody

Catalog Number:CL594-98197



## Basic Information

Catalog Number:

CL594-98197

Size:

100ug , 500 ug/ml

Source:

Rabbit

Isotype:

IgG

Immunogen Catalog Number:

EG2126

GenBank Accession Number:

NM\_015779.2

GeneID (NCBI):

50701

UNIPROT ID:

Q3UP87

Full Name:

elastase 2, neutrophil

Calculated MW:

29KD

Purification Method:

Protein A purification

CloneNo.:

241842G3

Excitation/Emission maxima wavelengths:

588 nm / 604 nm

## Applications

Tested Applications:

FC (Intra)

Species Specificity:

mouse

## Background Information

ELA2 (Neutrophil elastase) is also named as ELAL, NE, HLE, HNE, PMN-E, SERP1, GE, ELANE and belongs to the peptidase S1 family. It is a 33-kDa enzyme with several isoforms that differ in their extent of glycosylation (PMID:12223222). Human neutrophil elastase (HNE) is a serine protease with potent proteolytic activity (3), which is reported to cause mucin secretion (degranulation) (PMID:12169572). It may contribute to the directed migration of leukocytes into flamed postcapillary venules in addition to contributing to the process of tissue emigration (PMID:9683424). The full length protein has a signal peptide, propeptide and three glycosylation sites.

## Storage

Storage:

Store at 2-8°C. Avoid exposure to light. Stable for one year after shipment.

Storage Buffer:

PBS with 0.09% sodium azide, pH7.3

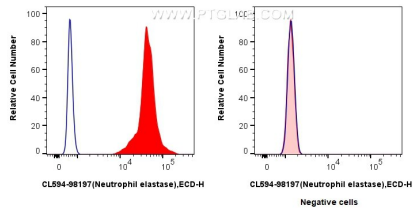
For technical support and original validation data for this product please contact:

T: 1 (888) 4PTGLAB (1-888-478-4522) (toll free in USA), or 1(312) 455-8498 (outside USA)

E: [proteintech@ptglab.com](mailto:proteintech@ptglab.com)  
W: [ptglab.com](http://ptglab.com)

This product is exclusively available under Proteintech Group brand and is not available to purchase from any other manufacturer.

## Selected Validation Data



1x10<sup>6</sup> mouse bone marrow cells (left) or NIH/3T3 cells (right) were intracellularly stained with 0.25 ug CoraLite®594 Anti-Mouse Neutrophil elastase Rabbit RecAb (CL594-98197, Clone: 241842G3) (red) or CoraLite®594 Rabbit IgG Isotype Control RecAb (CL594-98136, Clone: 240953C9) (blue). Cells were fixed with 4% PFA and permeabilized with Flow Cytometry Perm Buffer (PF00011-C).