

For Research Use Only

# CoraLite®594 Anti-Mouse CSF2RA/CD116 Rabbit Recombinant Antibody

Catalog Number:CL594-98196



## Basic Information

Catalog Number:

CL594-98196

Size:

100ug , 500 ug/ml

Source:

Rabbit

Isotype:

IgG

GenBank Accession Number:

NM\_009970.2

GeneID (NCBI):

12982

UNIPROT ID:

Q00941

Full Name:

colony stimulating factor 2 receptor,  
alpha, low-affinity (granulocyte-  
macrophage)

Calculated MW:

42kDa

Purification Method:

Protein A purification

CloneNo.:

241889A5

Excitation/Emission maxima  
wavelengths:

588 nm / 604 nm

## Applications

Tested Applications:

FC

Species Specificity:

mouse

## Background Information

CD116, also named as CSF2RA CDw116 CSF2RAX CSF2RAY CSF2RX CSF2RY GM-CSF-R-alpha GMCSFR and GMR, is a low affinity receptor for granulocyte-macrophage colony-stimulating factor. CD116 transduces a signal that results in the proliferation, differentiation, and functional activation of hematopoietic cells.

## Storage

Storage:

Store at 2-8°C. Avoid exposure to light. Stable for one year after shipment.

Storage Buffer:

PBS with 0.09% sodium azide

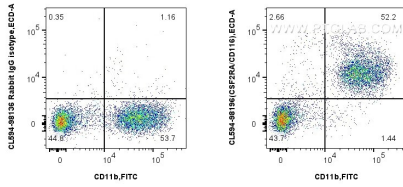
For technical support and original validation data for this product please contact:

T: 1 (888) 4PTGLAB (1-888-478-4522) (toll free  
in USA), or 1(312) 455-8498 (outside USA)

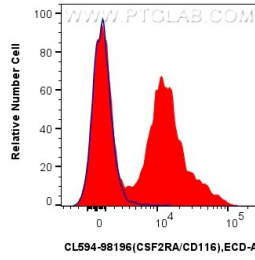
E: [proteintech@ptglab.com](mailto:proteintech@ptglab.com)  
W: [ptglab.com](http://ptglab.com)

This product is exclusively available under Proteintech Group brand and is not available to purchase from any other manufacturer.

## Selected Validation Data



1x10<sup>6</sup> mouse bone marrow cells were surface stained with FITC Plus Anti-Mouse CD11b, and 0.25 ug CoraLite@594 Anti-Mouse CSF2RA/CD116 Rabbit RecAb (CL594-98196, Clone: 241889A5) or CoraLite@594 Rabbit IgG Isotype Control RecAb (CL594-98136, Clone: 240953C9). Cells were not fixed.



1x10<sup>6</sup> mouse bone marrow cells were surface stained with 0.25 ug CoraLite@594 Anti-Mouse CSF2RA/CD116 Rabbit RecAb (CL594-98196, Clone: 241889A5) (red) or CoraLite@594 Rabbit IgG Isotype Control RecAb (CL594-98136, Clone: 240953C9) (blue). Cells were not fixed.