

For Research Use Only

CoraLite®594 Anti-Human ICAM3/CD50 Rabbit Recombinant Antibody

Catalog Number: CL594-98097



Basic Information

Catalog Number:

CL594-98097

Size:

100 tests, 5 ul/test

Source:

Rabbit

Isotype:

IgG

GenBank Accession Number:

BC058903

GeneID (NCBI):

3385

UNIPROT ID:

P32942

Full Name:

intercellular adhesion molecule 3

Calculated MW:

547 aa, 60 kDa

Purification Method:

Protein A purification

CloneNo.:

241418E8

Excitation/Emission maxima wavelengths:

588 nm / 604 nm

Applications

Tested Applications:

FC

Species Specificity:

human

Background Information

The intercellular adhesion molecule (ICAM) family is a subfamily of immunoglobulin superfamily with five known ICAM family members (ICAM1 to ICAM5) which play a role in inflammation, immune responses, and intracellular signaling (PMID: 23287428; 29477378). ICAM3, also known as CD50, is a type I transmembrane glycoprotein that contains five C2-type immunoglobulin-like domains in its extracellular region, a single transmembrane segment, and a C-terminus cytoplasmic tail. ICAM3 is selectively expressed on leukocytes (PMID: 1730916; 8132828). It is the primary ligand for LFA-1 and is involved in various immune processes, including T-cell activation, and macrophage recognition of apoptotic cells (PMID: 11812993; 23775590).

Storage

Storage:

Store at 2-8°C. Avoid exposure to light. Stable for one year after shipment.

Storage Buffer:

PBS with 0.09% sodium azide and 0.5% BSA, pH7.3

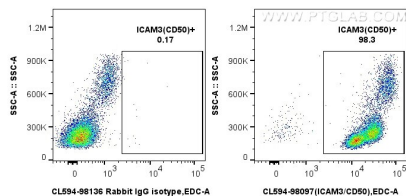
For technical support and original validation data for this product please contact:

T: 1 (888) 4PTGLAB (1-888-478-4522) (toll free in USA), or 1(312) 455-8498 (outside USA)

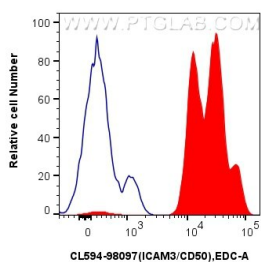
E: proteintech@ptglab.com
W: ptglab.com

This product is exclusively available under Proteintech Group brand and is not available to purchase from any other manufacturer.

Selected Validation Data



1x10⁶ human PBMCs were surface stained with 5 ul CoraLite®594 Anti-Human ICAM3/CD50 Rabbit RecAb (CL594-98097, Clone: 241418E8) or CoraLite®594 Rabbit IgG Isotype Control RecAb (CL594-98136, Clone: 240953C9). Cells were incubated with FC Receptor Block prior to staining. Cells were not fixed.



1x10⁶ human PBMCs were surface stained with 5 ul CoraLite®594 Anti-Human ICAM3/CD50 Rabbit RecAb (CL594-98097, Clone: 241418E8) (red) or CoraLite®594 Rabbit IgG Isotype Control RecAb (CL594-98136, Clone: 240953C9) (blue). Cells were incubated with FC Receptor Block prior to staining. Cells were not fixed.