

For Research Use Only

# CoraLite®594 Anti-Human CD9 Rabbit Recombinant Antibody

Catalog Number:CL594-98095



## Basic Information

Catalog Number:

CL594-98095

Size:

100tests , 5 ul/test

Source:

Rabbit

Isotype:

IgG

GenBank Accession Number:

NM\_001769.4

GeneID (NCBI):

928

UNIPROT ID:

P21926

Full Name:

CD9 molecule

Calculated MW:

25 kDa

Purification Method:

Protein A purification

CloneNo.:

240830E6

Excitation/Emission maxima wavelengths:

588 nm / 604 nm

## Applications

Tested Applications:

FC

Species Specificity:

human

## Background Information

The cell-surface molecule CD9, a member of the transmembrane-4 superfamily, interacts with the integrin family and other membrane proteins, and is postulated to participate in cell migration and adhesion. Expression of CD9 enhances membrane fusion between muscle cells and promotes viral infection in some cells (PMID:10459022). It is often used as a mesenchymal stem cell marker (PMID:18005405). The CD9 antigen appears to be a 227-amino acid molecule with four hydrophobic domains and one N-glycosylation site (PMID: 1840589). This antibody detects bands of 23-30 kDa, it may be due to the difference of glycosylations (PMID: 8701996).

## Storage

Storage:

Store at 2-8°C. Avoid exposure to light. Stable for one year after shipment.

Storage Buffer:

PBS with 0.09% sodium azide and 0.5% BSA.

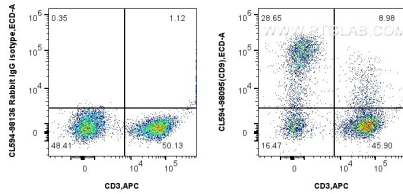
For technical support and original validation data for this product please contact:

T: 1 (888) 4PTGLAB (1-888-478-4522) (toll free in USA), or 1(312) 455-8498 (outside USA)

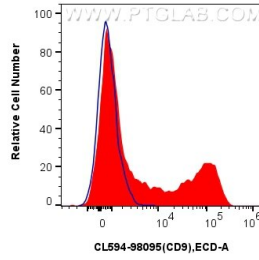
E: [proteintech@ptglab.com](mailto:proteintech@ptglab.com)  
W: [ptglab.com](http://ptglab.com)

This product is exclusively available under Proteintech Group brand and is not available to purchase from any other manufacturer.

## Selected Validation Data



1x10<sup>6</sup> human PBMCs were surface stained with APC Anti-Human CD3 and 5 ul CoraLite® 594 Anti-Human CD9 Rabbit Recombinant Antibody (CL594-98095, Clone:240830E6), or CoraLite® 594 Rabbit IgG Isotype Control Recombinant Antibody (CL594-98136, Clone: 240953C9). Cells were incubated with FC Receptor Block prior to staining. Cells were not fixed.



1x10<sup>6</sup> human PBMCs were surface stained with 5 ul CoraLite® 594 Anti-Human CD9 Rabbit Recombinant Antibody (CL594-98095, Clone:240830E6)(red), or CoraLite® 594 Rabbit IgG Isotype Control Recombinant Antibody (CL594-98136, Clone: 240953C9)(blue). Cells were incubated with FC Receptor Block prior to staining. Cells were not fixed.