

For Research Use Only

# CoraLite®594 Anti-Human IL-1RAP Rabbit Recombinant Antibody

Catalog Number:CL594-98073



## Basic Information

<b>Catalog Number:</b> CL594-98073	<b>GenBank Accession Number:</b> NM_002182.4	<b>Purification Method:</b> Protein A purification
<b>Size:</b> 100tests , 5 ul/test	<b>GeneID (NCBI):</b> 3556	<b>CloneNo.:</b> 240756A12
<b>Source:</b> Rabbit	<b>UNIPROT ID:</b> Q9NPH3-1	<b>Excitation/Emission maxima wavelengths:</b> 588 nm / 604 nm
<b>Isotype:</b> IgG	<b>Full Name:</b> interleukin 1 receptor accessory protein	
<b>Immunogen Catalog Number:</b> EG0827	<b>Calculated MW:</b> 65 kDa	

## Applications

**Tested Applications:**  
FC

**Species Specificity:**  
human

## Background Information

IL-1RAP (Interleukin-1 receptor accessory protein), also known as IL-1RAcP, IL-1R-3, or IL-1R3, is a member of the interleukin-1 receptor family. IL-1RAP is composed of an extracellular region containing three Ig-like C2 type domains, a transmembrane region, and a cytoplasmic region with a TIR (Toll-IL-1-receptor) domain. IL-1RAP functions as a co-receptor for IL-1, IL-33, IL-36. It plays an essential role in the signaling of the IL-1 family cytokines such as IL-1, IL-33, and IL-36, as well as tyrosine kinases FLT3 and c-Kit. IL-1RAP can also exist in a soluble form.

## Storage

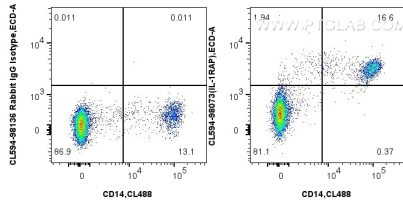
**Storage:**  
Store at 2-8°C. Avoid exposure to light. Stable for one year after shipment.

**Storage Buffer:**  
PBS with 0.09% sodium azide and 0.5% BSA, pH7.3

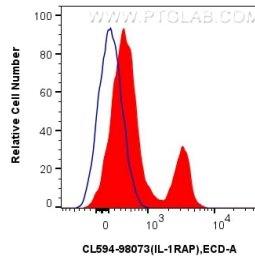
For technical support and original validation data for this product please contact:  
T: 1 (888) 4PTGLAB (1-888-478-4522) (toll free in USA), or 1(312) 455-8498 (outside USA)      E: proteintech@ptglab.com  
W: ptglab.com

This product is exclusively available under Proteintech Group brand and is not available to purchase from any other manufacturer.

## Selected Validation Data



1x10<sup>6</sup> FC receptor blocked human PBMCs were surface stained with CoraLite® Plus 488 Anti-Human CD14, and 5 ul CoraLite® 594 Anti-Human IL-1RAP Rabbit RecAb (CL594-98073, Clone:240756A12) or Rabbit Recombinant Antibody (CL488-98040, Clone: 230332D7). Cells were not fixed.



1x10<sup>6</sup> FC receptor blocked human PBMCs were surface stained with 5 ul CoraLite® 594 Anti-Human IL-1RAP Rabbit RecAb (CL594-98073, Clone: 240756A12) (red) or Rabbit Recombinant Antibody (CL488-98040, Clone: 230332D7) (blue). Cells were not fixed.