

For Research Use Only

CoraLite®594 Anti-Mouse MCP-1/CCL2 Rabbit Recombinant Antibody

Catalog Number:CL594-98028



Basic Information

Catalog Number: CL594-98028	GenBank Accession Number: NM-011333	Purification Method: Protein A purification
Size: 100ug , 500 µg/ml	GeneID (NCBI): 20296	CloneNo.: 230483A9
Source: Rabbit	UNIPROT ID: P10148	Excitation/Emission maxima wavelengths: 588 nm / 604 nm
Isotype: IgG	Full Name: chemokine (C-C motif) ligand 2	

Applications

Tested Applications:
FC (Intra)

Species Specificity:
mouse

Background Information

Monocyte chemoattractant protein 1 (MCP-1; also known as CCL2), is chemotactic for monocyte/macrophage, B-cell, and T-lymphocyte, and belongs to the CC subfamily of chemokines. Chemokines are a superfamily of secreted proteins involved in immunoregulatory and inflammatory processes. The human ortholog has been implicated in the pathogenesis of diseases characterized by monocytic infiltrates, such as psoriasis, rheumatoid arthritis, and atherosclerosis.

Storage

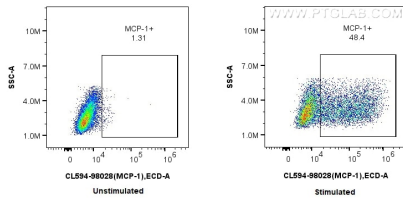
Storage:
Store at 2-8°C. Avoid exposure to light. Stable for one year after shipment.

Storage Buffer:
PBS with 0.09% sodium azide.

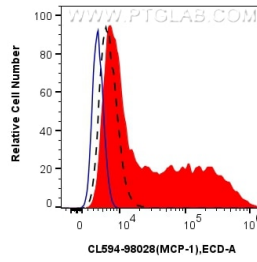
For technical support and original validation data for this product please contact:
T: 1 (888) 4PTGLAB (1-888-478-4522) (toll free in USA), or 1(312) 455-8498 (outside USA) E: proteintech@ptglab.com
W: ptglab.com

This product is exclusively available under Proteintech Group brand and is not available to purchase from any other manufacturer.

Selected Validation Data



1×10^6 untreated or LPS and Brefeldin A treated RAW 264.7 cells were intracellularly stained with 0.25 μ g CoraLite®594 Anti-Mouse MCP-1 Rabbit Recombinant Antibody (CL594-98028, Clone: 230483A9). Cells were fixed with 4% PFA and permeabilized with Flow Cytometry Perm Buffer (PF00011-C).



1×10^6 LPS and Brefeldin A treated RAW 264.7 cells were intracellularly stained with 0.25 μ g CoraLite®594 Anti-Mouse MCP-1 Rabbit Recombinant Antibody (CL594-98028, Clone: 230483A9) (red), or 0.25 μ g Isotype Control (blue). 1×10^6 untreated RAW 264.7 cells were intracellularly stained with 0.25 μ g CoraLite®594 Anti-Mouse MCP-1 Rabbit Recombinant Antibody (CL594-98028, Clone: 230483A9) (black, dashed). Cells were fixed with 4% PFA and permeabilized with Flow