

For Research Use Only

CoraLite®594 Anti-Human TLR3/CD283 Rabbit Recombinant Antibody

Catalog Number:CL594-98016



Basic Information

Catalog Number: CL594-98016	GenBank Accession Number: BC094737	Purification Method: Protein A purification
Size: 100tests , 5 ul/test	GeneID (NCBI): 7098	CloneNo.: 230445F1
Source: Rabbit	UNIPROT ID: O15455	Excitation/Emission maxima wavelengths: 588 nm / 604 nm
Isotype: IgG	Full Name: toll-like receptor 3	
Immunogen Catalog Number: AG34044	Calculated MW: 904 aa, 104 kDa	

Applications

Tested Applications:
FC (Intra)

Species Specificity:
human

Background Information

TLR3 belongs to the Toll-like receptor family which is important in the innate immune response to pathogens. TLRs are highly conserved from Drosophila to humans and share structural and functional similarities. TLR3 is a nucleotide-sensing TLR that is activated by double-stranded RNA. Upon recognition of dsRNA, TLR3 transmits signals via the adaptor protein TICAM-1/TRIF, leading to the induction of type I IFN, cytokine/chemokine production, and dendritic cell (DC) maturation (PMID: 18262679).

Storage

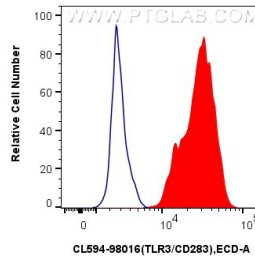
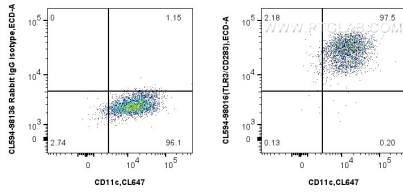
Storage:
Store at 2-8°C. Avoid exposure to light. Stable for one year after shipment.

Storage Buffer:
PBS with 0.09% sodium azide and 0.5% BSA

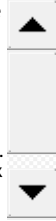
For technical support and original validation data for this product please contact:
T: 1 (888) 4PTGLAB (1-888-478-4522) (toll free in USA), or 1(312) 455-8498 (outside USA) E: proteintech@ptglab.com
W: ptglab.com

This product is exclusively available under Proteintech Group brand and is not available to purchase from any other manufacturer.

Selected Validation Data



1x10⁶ human monocyte-derived immature dendritic cells were intracellularly stained with 5 ul CoraLite® 594 Anti-Human TLR3/CD283 Rabbit RecAb (CL594-98016, Clone: 230445F1) or CoraLite® 594 Rabbit IgG Isotype Control RecAb (CL594-98136, Clone: 240953C9). Cells were co-stained with CoraLite® Plus 647 Anti-Human CD11c. Cells were incubated with FC Receptor Block prior to fixing and staining. Cells were fixed with 4% PFA and permeabilized with Flow



1x10⁶ human monocyte-derived immature dendritic cells were intracellularly stained with 5 ul CoraLite® 594 Anti-Human TLR3/CD283 Rabbit RecAb (CL594-98016, Clone: 230445F1) (red), or CoraLite® 594 Rabbit IgG Isotype Control RecAb (CL594-98136, Clone: 240953C9) (blue). Cells were incubated with FC Receptor Block prior to fixing and staining. Cells were fixed with 4% PFA and permeabilized with Flow Cytometry Perm Buffer (PF00011-C).