

For Research Use Only

CoraLite®594 Anti-Human CEACAM5/8 (CD66b/e) Rabbit Recombinant Antibody

Catalog Number: CL594-98012



Basic Information

Catalog Number:

CL594-98012

Size:

100tests , 5 ul/test

Source:

Rabbit

Isotype:

IgG

GenBank Accession Number:

BC026263

GeneID (NCBI):

1088

UNIPROT ID:

P31997

Full Name:

carcinoembryonic antigen-related cell adhesion molecule 8

Calculated MW:

38 kDa

Purification Method:

Protein A purification

CloneNo.:

230353B7

Excitation/Emission maxima wavelengths:

588 nm / 604 nm

Applications

Tested Applications:

FC

Species Specificity:

human

Background Information

Carcinoembryonic antigen-related cell adhesion molecules (CEACAMs) belong to the immunoglobulin superfamily of cell adhesion molecules. CEACAMs play major roles in cell-cell and cell-ECM adhesion and have been implicated in controlling cell proliferation, angiogenesis, and tissue remodeling (PMID: 23021083). Carcinoembryonic antigen (CEA), also known as CEACAM5 or CD66e mainly serves as a cell adhesion molecule mediating intercellular contact by both homophilic and heterophilic binding (PMID: 21731662). CEACAM8, also known as CD66b, CGM6 or NCA-95, is a glycosylphosphatidylinositol (GPI)-linked glycoprotein expressed on granulocytes and is involved in regulating adhesion and activation of eosinophils (PMID: 8104998; 18056392; 18056392). This antibody is raised against 35-319 aa of human CEACAM8/CD66b and can cross-react with CEACAM5/CD66e.

Storage

Storage:

Store at 2-8°C. Avoid exposure to light. Stable for one year after shipment.

Storage Buffer:

PBS with 0.09% sodium azide and 0.5% BSA.

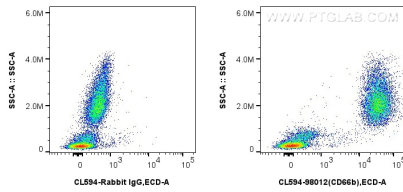
For technical support and original validation data for this product please contact:

T: 1 (888) 4PTGLAB (1-888-478-4522) (toll free in USA), or 1(312) 455-8498 (outside USA)

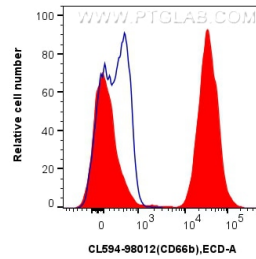
E: proteintech@ptglab.com
W: ptglab.com

This product is exclusively available under Proteintech Group brand and is not available to purchase from any other manufacturer.

Selected Validation Data



1x10⁶ human peripheral blood leukocytes were surface stained with 5 ul CoraLite®594 Anti-Human CEACAM5/8 (CD66b/e) Rabbit Recombinant Antibody (CL594-98012, Clone: 230353B7), or Isotype Control. Cells were incubated with FC Receptor Block prior to staining. Cells were not fixed.



1x10⁶ human peripheral blood leukocytes were surface stained with 5 ul CoraLite®594 Anti-Human CEACAM5/8 (CD66b/e) Rabbit Recombinant Antibody (CL594-98012, Clone: 230353B7) (red), or Isotype Control (blue). Cells were incubated with FC Receptor Block prior to staining. Cells were not fixed.