

For Research Use Only

CoraLite®594 Anti-Human VEGFR2/CD309 Rabbit Recombinant Antibody

Catalog Number: CL594-98009



Basic Information

Catalog Number:

CL594-98009

Size:

100tests , 5 ul/test

Source:

Rabbit

Isotype:

IgG

GenBank Accession Number:

NM_002253

GeneID (NCBI):

3791

UNIPROT ID:

P35968-1

Full Name:

kinase insert domain receptor (a type
III receptor tyrosine kinase)

Calculated MW:

152kd

Purification Method:

Protein A purification

CloneNo.:

230238B11

Excitation/Emission maxima
wavelengths:

588 nm / 604 nm

Applications

Tested Applications:

FC

Species Specificity:

human

Background Information

VEGFR2, also named as CD309, KDR and FLK1, is a receptor for VEGF or VEGFC. VEGFR2 which belongs to the protein kinase superfamily, has a tyrosine-protein kinase activity. The VEGF-kinase ligand/receptor signaling system plays a key role in vascular development and regulation of vascular permeability. In case of HIV-1 infection, the interaction with extracellular viral Tat protein seems to enhance angiogenesis in Kaposi's sarcoma lesions. VEGFR2 functions as the main mediator of VEGF-induced endothelial proliferation, survival, migration, tubular morphogenesis and sprouting. Mutations of this gene are implicated in infantile capillary hemangiomas.

Storage

Storage:

Store at 2-8°C. Avoid exposure to light. Stable for one year after shipment.

Storage Buffer:

PBS with 0.09% sodium azide and 0.5% BSA.

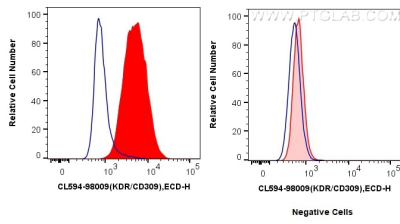
For technical support and original validation data for this product please contact:

T: 1 (888) 4PTGLAB (1-888-478-4522) (toll free
in USA), or 1(312) 455-8498 (outside USA)

E: proteintech@ptglab.com
W: ptglab.com

This product is exclusively available under Proteintech Group brand and is not available to purchase from any other manufacturer.

Selected Validation Data



1x10⁶ HUVEC cells (left) or HeLa cells (right) were surface stained with 5 ul CoraLite®594 Anti-Human VEGFR2/CD309 Rabbit Recombinant Antibody (CL594-98009, Clone: 230238B11) (red), or Isotype Control (blue). Cells were not fixed.