

For Research Use Only

CoraLite®594-conjugated Phospho-RB1 (Ser780) Recombinant antibody

Catalog Number:CL594-84692



Basic Information

Catalog Number:

CL594-84692

Size:

100ul , Concentration: 1000 µg/ml by Nanodrop;

Source:

Rabbit

Isotype:

IgG

GenBank Accession Number:

BC039060

GeneID (NCBI):

5925

UNIPROT ID:

P06400

Full Name:

retinoblastoma 1

Calculated MW:

928 aa, 106 kDa

Observed MW:

110 kDa

Purification Method:

Protein A purification

CloneNo.:

241827H7

Excitation/Emission maxima wavelengths:

588 nm / 604 nm

Applications

Tested Applications:

FC (Intra)

Species Specificity:

human

Background Information

RB1, also named as pp110, pRb and p105 Rb, belongs to the retinoblastoma protein (RB) family. It is a key regulator of entry into cell division that acts as a tumor suppressor. RB1 acts as a transcription repressor of E2F1 target genes. The underphosphorylated, active form of RB1 interacts with E2F1 and represses its transcription activity, leading to cell cycle arrest. It is directly involved in heterochromatin formation by maintaining overall chromatin structure and, in particular, that of constitutive heterochromatin by stabilizing histone methylation. It recruits and targets histone methyltransferases SUV39H1, SUV420H1 and SUV420H2, leading to epigenetic transcriptional repression. RB1 controls histone H4 'Lys-20' trimethylation and inhibits the intrinsic kinase activity of TAF1. It mediates transcriptional repression by SMARCA4/BRG1 by recruiting a histone deacetylase (HDAC) complex to the c-FOS promoter. In resting neurons, transcription of the c-FOS promoter is inhibited by BRG1-dependent recruitment of a phospho-RB1-HDAC1 repressor complex. Upon calcium influx, RB1 is dephosphorylated by calcineurin, which leads to release of the repressor complex. In case of viral infections, interactions with SV40 large T antigen, HPV E7 protein or adenovirus E1A protein induce the disassembly of RB1-E2F1 complex thereby disrupting RB1's activity. This antibody is a rabbit polyclonal antibody raised against residues near the C terminus of human RB1.

Storage

Storage:

Store at -20°C. Avoid exposure to light. Stable for one year after shipment.

Storage Buffer:

PBS with 50% Glycerol, 0.05% Proclin300, 0.5% BSA, pH 7.3.

Aliquoting is unnecessary for -20°C storage

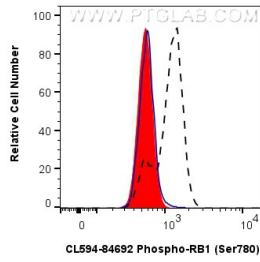
For technical support and original validation data for this product please contact:

T: 1 (888) 4PTGLAB (1-888-478-4522) (toll free in USA), or 1(312) 455-8498 (outside USA)

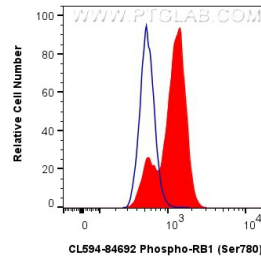
E: proteintech@ptglab.com
W: ptglab.com

This product is exclusively available under Proteintech Group brand and is not available to purchase from any other manufacturer.

Selected Validation Data



1×10^6 K-562 cells untreated (dashed lines) or treated with λ phosphatase which intracellularly stained with 0.25 μ g Coralite®594 Phospho-Rb1 (Ser780) Recombinant Antibody (CL594-84692, Clone:241827H7)(red), or 0.25 μ g Coralite®594 Rabbit IgG Isotype Control RecAb (CL594-98136, Clone: 240953C9) (blue). Cells were fixed with 4% PFA and permeabilized with 90% MeOH.



1×10^6 K-562 cells were intracellularly stained with 0.25 μ g Coralite®594 Phospho-Rb1 (Ser780) Recombinant Antibody (CL594-84692, Clone:241827H7)(red), or 0.25 μ g Coralite®594 Rabbit IgG Isotype Control RecAb (CL594-98136, Clone: 240953C9) (blue). Cells were fixed with 4% PFA and permeabilized with 90% MeOH.