

For Research Use Only

# CoraLite®594-conjugated CD206 Recombinant antibody

Catalog Number:CL594-81525



## Basic Information

<b>Catalog Number:</b> CL594-81525	<b>GenBank Accession Number:</b> NM_002438	<b>Purification Method:</b> Protein A purification
<b>Size:</b> 100ul , Concentration: 1000 µg/ml by Nanodrop;	<b>GeneID (NCBI):</b> 4360	<b>CloneNo.:</b> 1G15
<b>Source:</b> Rabbit	<b>UNIPROT ID:</b> P22897	<b>Recommended Dilutions:</b> IF-P 1:50-1:500
<b>Isotype:</b> IgG	<b>Full Name:</b> mannose receptor, C type 1	<b>Excitation/Emission maxima wavelengths:</b> 588 nm / 604 nm
	<b>Calculated MW:</b> 166 kDa	
	<b>Observed MW:</b> 170 kDa	

## Applications

<b>Tested Applications:</b> IF-P	<b>Positive Controls:</b> IF-P : human placenta tissue,
<b>Species Specificity:</b> human, pig	

## Background Information

CD206, also named as MMR, CLEC13D and MRC1, is a type I membrane receptor that mediates the endocytosis of glycoproteins by macrophages. CD206 has been shown to bind high-mannose structures on the surface of potentially pathogenic viruses, bacteria, and fungi so that they can be neutralized by phagocytic engulfment. CD206 is a 170 kDa transmembrane protein which contains 5 domains: an amino-terminal cysteine-rich region, a fibronectin type II repeat, a series of eight tandem lectin-like carbohydrate recognition domains (responsible for the recognition of mannose and fucose), a transmembrane domain, and an intracellular carboxy-terminal tail. It is expressed on most tissue macrophages, in vitro derived dendritic cells, lymphatic and sinusoidal endothelia.

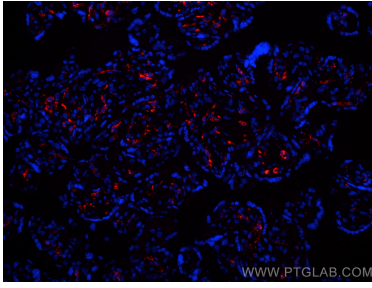
## Storage

**Storage:**  
Store at -20°C. Avoid exposure to light. Stable for one year after shipment.  
**Storage Buffer:**  
PBS with 50% Glycerol, 0.05% Proclin300, 0.5% BSA, pH 7.3.  
**Aliquoting is unnecessary for -20°C storage**

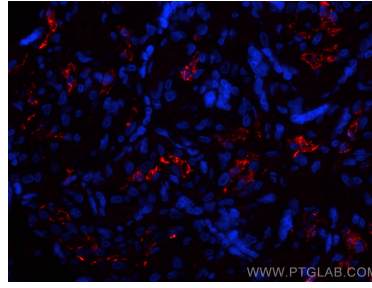
For technical support and original validation data for this product please contact:  
T: 1 (888) 4PTGLAB (1-888-478-4522) (toll free in USA), or 1(312) 455-8498 (outside USA)  
E: proteintech@ptglab.com  
W: ptglab.com

**This product is exclusively available under Proteintech Group brand and is not available for purchase from any other manufacturer.**

## Selected Validation Data



Immunofluorescent analysis of (4% PFA) fixed paraffin-embedded human placenta tissue using CoraLite®594 CD206 antibody (CL594-81525, Clone: 1G15) at dilution of 1:200. Heat mediated antigen retrieval with Tris-EDTA buffer (pH 9.0).



Immunofluorescent analysis of (4% PFA) fixed paraffin-embedded human placenta tissue using CoraLite®594 CD206 antibody (CL594-81525, Clone: 1G15) at dilution of 1:200. Heat mediated antigen retrieval with Tris-EDTA buffer (pH 9.0).