

For Research Use Only

# CoraLite®594-conjugated Desmin Monoclonal antibody

Catalog Number:CL594-67793



## Basic Information

<b>Catalog Number:</b> CL594-67793	<b>GenBank Accession Number:</b> BC032116	<b>Purification Method:</b> Protein G purification
<b>Size:</b> 100ul , Concentration: 1000 ug/ml by Nanodrop;	<b>GeneID (NCBI):</b> 1674	<b>CloneNo.:</b> 2B1A11
<b>Source:</b> Mouse	<b>UNIPROT ID:</b> P17661	<b>Recommended Dilutions:</b> IF-P 1:50-1:500
<b>Isotype:</b> IgG1	<b>Full Name:</b> desmin	<b>Excitation/Emission maxima wavelengths:</b> 588 nm / 604 nm
<b>Immunogen Catalog Number:</b> AG9675	<b>Calculated MW:</b> 470 aa, 54 kDa	
	<b>Observed MW:</b> 52 kDa	

## Applications

<b>Tested Applications:</b> IF-P	<b>Positive Controls:</b> IF-P : human colon tissue,
<b>Species Specificity:</b> Human, pig, mouse	

## Background Information

Desmin is the main intermediate filament protein in skeletal and cardiac muscle cells and is essential for both the structural integrity and the survival of muscle cells. As an abundant muscle-specific protein, desmin has been widely used as a marker of muscle derived tumors. Anti-desmin is also valuable in the differential diagnosis of tumors of uncertain origin.

## Storage

**Storage:**  
Store at -20°C. Avoid exposure to light. Stable for one year after shipment.  
**Storage Buffer:**  
PBS with 50% Glycerol, 0.05% Proclin300, 0.5% BSA, pH 7.3.  
Aliquoting is unnecessary for -20°C storage

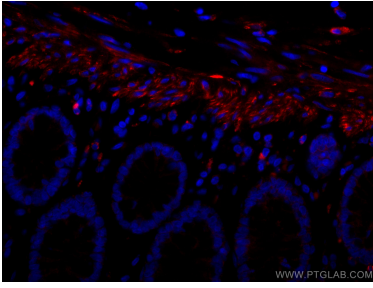
For technical support and original validation data for this product please contact:

T: 1 (888) 4PTGLAB (1-888-478-4522) (toll free  
in USA), or 1(312) 455-8498 (outside USA)

E: [proteintech@ptglab.com](mailto:proteintech@ptglab.com)  
W: [ptglab.com](http://ptglab.com)

**This product is exclusively available under Proteintech  
Group brand and is not available to purchase from any  
other manufacturer.**

## Selected Validation Data



Immunofluorescent analysis of (4% PFA) fixed human colon tissue using CoraLite®594 Desmin antibody (CL594-67793, Clone: 2B1A11) at dilution of 1:200. DAPI (blue).