

For Research Use Only

# CoraLite®594-conjugated MYBPC3 Monoclonal antibody



Catalog Number:CL594-67608

## Basic Information

<b>Catalog Number:</b> CL594-67608	<b>GenBank Accession Number:</b> BC151211	<b>Purification Method:</b> Protein G purification
<b>Size:</b> 100ul , Concentration: 1000 µg/ml by Nanodrop;	<b>GeneID (NCBI):</b> 4607	<b>CloneNo.:</b> 3C8F8
<b>Source:</b> Mouse	<b>UNIPROT ID:</b> Q14896	<b>Recommended Dilutions:</b> WB 1:2000-1:16000
<b>Isotype:</b> IgG1	<b>Full Name:</b> myosin binding protein C, cardiac	<b>Excitation/Emission maxima wavelengths:</b> 588 nm / 604 nm
<b>Immunogen Catalog Number:</b> AG15848	<b>Calculated MW:</b> 1274 aa, 141 kDa	
	<b>Observed MW:</b> 140-150 kDa	

## Applications

<b>Tested Applications:</b> WB	<b>Positive Controls:</b> WB : rat heart tissue, mouse heart tissue
<b>Species Specificity:</b> Human, mouse, rat, pig	

## Background Information

MYBPC3 belongs to the immunoglobulin superfamily and MyBP family. MYBPC3 located in the crossbridge region of vertebrate striated muscle a bands. In vitro it binds MHC, F-actin and native thin filaments, and modifies the activity of actin-activated myosin ATPase. It may modulate muscle contraction or may play a more structural role. Defects in MYBPC3 are the cause of cardiomyopathy familial hypertrophic type 4 (CMH4).

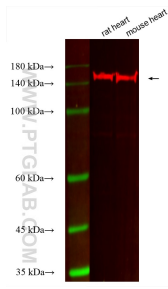
## Storage

**Storage:**  
Store at -20°C. Avoid exposure to light. Stable for one year after shipment.  
**Storage Buffer:**  
PBS with 50% Glycerol, 0.05% Proclin300, 0.5% BSA, pH 7.3.  
Aliquoting is unnecessary for -20°C storage

For technical support and original validation data for this product please contact:  
T: 1 (888) 4PTGLAB (1-888-478-4522) (toll free in USA), or 1(312) 455-8498 (outside USA)  
E: [proteintech@ptglab.com](mailto:proteintech@ptglab.com)  
W: [ptglab.com](http://ptglab.com)

This product is exclusively available under Proteintech Group brand and is not available to purchase from any other manufacturer.

## Selected Validation Data



Various lysates were subjected to SDS PAGE followed by western blot with CL594-67608 (MYBPC3 antibody) at dilution of 1:8000 incubated at room temperature for 1.5 hours.