

For Research Use Only

CoraLite®594-conjugated PPP4R1 Monoclonal antibody



Catalog Number:CL594-67392

Basic Information

Catalog Number:

CL594-67392

Size:

100ul , Concentration: 1000 µg/ml by
Nanodrop;

Source:

Mouse

Isotype:

IgG1

Immunogen Catalog Number:

AG26750

GenBank Accession Number:

BC060829

GeneID (NCBI):

9989

UNIPROT ID:

Q8TF05

Full Name:

protein phosphatase 4, regulatory
subunit 1

Calculated MW:

107 kDa

Observed MW:

120-130 kDa

Purification Method:

Protein G purification

CloneNo.:

3D12G12

Recommended Dilutions:

IF-P 1:50-1:500

**Excitation/Emission maxima
wavelengths:**

588 nm / 604 nm

Applications

Tested Applications:

IF-P, FC (Intra)

Species Specificity:

human, mouse

Positive Controls:

IF-P: mouse liver tissue,

Storage

Storage:

Store at -20°C. Avoid exposure to light. Stable for one year after shipment.

Storage Buffer:

PBS with 50% Glycerol, 0.05% Proclin300, 0.5% BSA, pH 7.3.

Aliquoting is unnecessary for -20°C storage

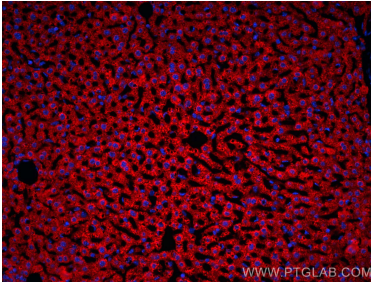
For technical support and original validation data for this product please contact:

T: 1 (888) 4PTGLAB (1-888-478-4522) (toll free
in USA), or 1(312) 455-8498 (outside USA)

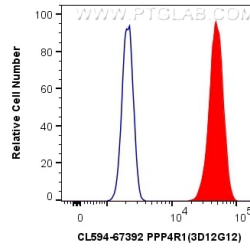
E: proteintech@ptglab.com
W: ptglab.com

**This product is exclusively available under Proteintech
Group brand and is not available to purchase from any
other manufacturer.**

Selected Validation Data



Immunofluorescent analysis of (4% PFA) fixed mouse liver tissue using CoraLite®594 PPP4R1 antibody (CL594-67392, Clone: 3D12G12) at dilution of 1:200.



1X10⁶ HeLa cells were intracellularly stained with 0.4 ug CoraLite®594 Anti-Human PPP4R1 (CL594-67392, Clone:3D12G12) (red), or 0.4 ug Control Antibody. Cells were fixed with 4% PFA and permeabilized with Flow Cytometry Perm Buffer (PF00011-C).