

For Research Use Only

# CoraLite®594-conjugated CD107a / LAMP1 Monoclonal antibody



Catalog Number:CL594-67300

1 Publications

## Basic Information

<b>Catalog Number:</b> CL594-67300	<b>GenBank Accession Number:</b> BC021288	<b>Purification Method:</b> Protein A purification
<b>Size:</b> 100ul , Concentration: 1000 µg/ml by Nanodrop;	<b>GeneID (NCBI):</b> 3916	<b>CloneNo.:</b> 3B2E9
<b>Source:</b> Mouse	<b>Full Name:</b> lysosomal-associated membrane protein 1	<b>Recommended Dilutions:</b> IF 1:50-1:500
<b>Isotype:</b> IgG2b	<b>Calculated MW:</b> 417 aa, 45 kDa	<b>Excitation/Emission maxima wavelengths:</b> 588 nm / 604 nm
<b>Immunogen Catalog Number:</b> AG28869	<b>Observed MW:</b> 90-120 kDa	

## Applications

<b>Tested Applications:</b> IF	<b>Positive Controls:</b> IF : human liver cancer tissue,
<b>Cited Applications:</b> IF	
<b>Species Specificity:</b> Human	
<b>Cited Species:</b> mouse	

## Background Information

LAMP1 (also known as CD107a) is a 90-120 kDa heavily glycosylated membrane protein enriched in the lysosomal membrane. LAMP1 functions to provide selectins with carbohydrate ligands. This protein has also been shown to be a marker of degranulation on lymphocytes such as CD8+ and NK cells and may also play a role in tumor cell differentiation and metastasis.

## Notable Publications

Author	Pubmed ID	Journal	Application
Liuyang Tian	37479181	J Adv Res	IF

## Storage

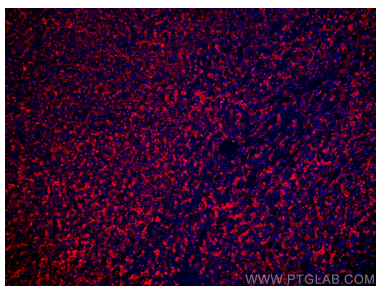
**Storage:**  
Store at -20°C. Avoid exposure to light. Stable for one year after shipment.  
**Storage Buffer:**  
PBS with 50% Glycerol, 0.05% Proclin300, 0.5% BSA, pH 7.3.  
**Aliquoting is unnecessary for -20°C storage**

\*\*\* 20ul sizes contain 0.1% BSA

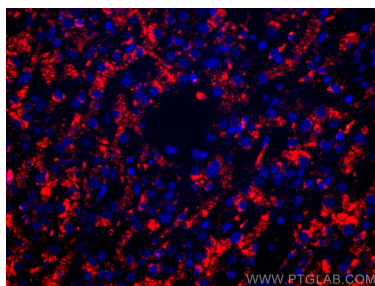
For technical support and original validation data for this product please contact:  
T: 1 (888) 4PTGLAB (1-888-478-4522) (toll free in USA), or 1(312) 455-8498 (outside USA)  
E: [proteintech@ptglab.com](mailto:proteintech@ptglab.com)  
W: [ptglab.com](http://ptglab.com)

This product is exclusively available under Proteintech Group brand and is not available to purchase from any other manufacturer.

## Selected Validation Data



Immunofluorescent analysis of (4% PFA) fixed human liver cancer tissue using CoraLite®594 CD107a antibody (CL594-67300, Clone: 3B2E9 ) at dilution of 1:200.



Immunofluorescent analysis of (4% PFA) fixed human liver cancer tissue using CoraLite®594 CD107a antibody (CL594-67300, Clone: 3B2E9 ) at dilution of 1:200.