

For Research Use Only

CoraLite®594-conjugated C1QA Monoclonal antibody

Catalog Number:CL594-67063



Basic Information

Catalog Number: CL594-67063	GenBank Accession Number: BC030153	Purification Method: Protein G purification
Size: 100ul , Concentration: 1000 ug/ml by Nanodrop;	GeneID (NCBI): 712	CloneNo.: 1B10E3
Source: Mouse	UNIPROT ID: P02745	Recommended Dilutions: IF/ICC 1:50-1:500
Isotype: IgG1	Full Name: complement component 1, q subcomponent, A chain	Excitation/Emission maxima wavelengths: 588 nm / 604 nm
Immunogen Catalog Number: AG28622	Calculated MW: 245 aa, 26 kDa	
	Observed MW: 30 kDa	

Applications

Tested Applications: IF/ICC	Positive Controls: IF/ICC : HepG2 cells,
Species Specificity: Human	

Background Information

The first component of complement, C1, is a calcium-dependent complex of the 3 subcomponents C1q, C1r, and C1s. C1q is composed of 18 polypeptide chains: six A-chains, six B-chains, and six C-chains. Each chain contains a collagen-like region located near the N terminus and a C-terminal globular region. Deficiency of C1q has been associated with lupus erythematosus and glomerulonephritis. This antibody is raised against C1qA which is the A-chain polypeptide of human complement subcomponent C1q.

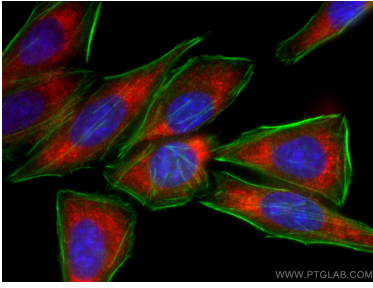
Storage

Storage:
Store at -20°C. Avoid exposure to light. Stable for one year after shipment.
Storage Buffer:
PBS with 50% Glycerol, 0.05% Proclin300, 0.5% BSA, pH 7.3.
Aliquoting is unnecessary for -20°C storage

For technical support and original validation data for this product please contact:
T: 1 (888) 4PTGLAB (1-888-478-4522) (toll free in USA), or 1(312) 455-8498 (outside USA)
E: proteintech@ptglab.com
W: ptglab.com

This product is exclusively available under Proteintech Group brand and is not available to purchase from any other manufacturer.

Selected Validation Data



Immunofluorescent analysis of (-20°C Ethanol) fixed HepG2 cells using CoraLite®594 C1QA antibody (CL594-67063, Clone: 1B10E3) at dilution of 1:200, CL488-Phalloidin (green).