

For Research Use Only

CoraLite®594-conjugated Calnexin Monoclonal antibody



Catalog Number:CL594-66903

Basic Information

Catalog Number: CL594-66903	GenBank Accession Number: BC003552	Purification Method: Protein G purification
Size: 100ul , Concentration: 1000 µg/ml by Nanodrop;	GeneID (NCBI): 821	CloneNo.: 2A2C6
Source: Mouse	Full Name: calnexin	Recommended Dilutions: WB 1:500-1:2000 IF 1:50-1:500
Isotype: IgG1	Calculated MW: 90 kDa	Excitation/Emission maxima wavelengths: 588 nm / 604 nm
Immunogen Catalog Number: AG25535	Observed MW: 90 kDa	

Applications

Tested Applications: IF, WB	Positive Controls:
Species Specificity: Human	WB : HEK-293 cells, HeLa cells, HepG2 cells IF : HepG2 cells, SKOV-3 cells

Background Information

Calnexin is a molecular chaperone that resides in the endoplasmic reticulum (ER) and participates in the folding and assembly of newly synthesized proteins. Calnexin is highly abundant in ER and is frequently used as an ER marker.

Storage

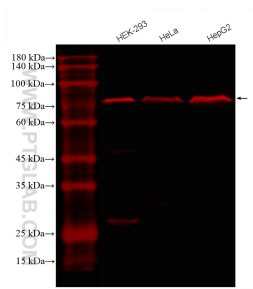
Storage:
Store at -20°C. Avoid exposure to light. Stable for one year after shipment.
Storage Buffer:
PBS with 50% Glycerol, 0.05% Proclin300, 0.5% BSA, pH 7.3.
Aliquoting is unnecessary for -20°C storage

*** 20ul sizes contain 0.1% BSA

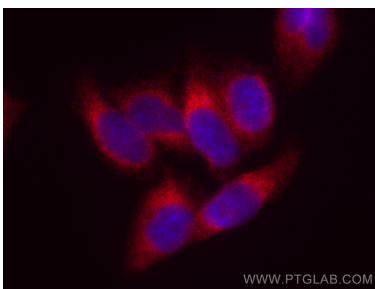
For technical support and original validation data for this product please contact:
T: 1 (888) 4PTGLAB (1-888-478-4522) (toll free in USA), or 1(312) 455-8498 (outside USA)
E: proteintech@ptglab.com
W: ptglab.com

This product is exclusively available under Proteintech Group brand and is not available to purchase from any other manufacturer.

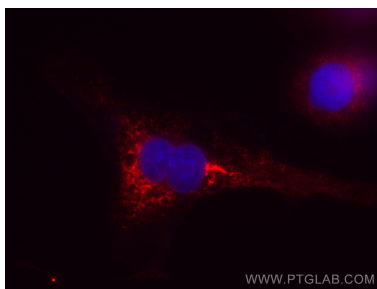
Selected Validation Data



Various lysates were subjected to SDS PAGE followed by western blot with CL594-66903 (Calnexin antibody) at dilution of 1:1000 incubated at room temperature for 1.5 hours.



Immunofluorescent analysis of (4% PFA) fixed HepG2 cells using CoraLite®594 Calnexin antibody (CL594-66903, Clone: 2A2C6) at dilution of 1:200.



Immunofluorescent analysis of (4% PFA) fixed SKOV-3 cells using CoraLite®594 Calnexin antibody (CL594-66903, Clone: 2A2C6) at dilution of 1:200.