

For Research Use Only

CoraLite®594-conjugated S6 Ribosomal protein Monoclonal antibody

Catalog Number:CL594-66886



Basic Information

Catalog Number: CL594-66886	GenBank Accession Number: BC000524	Purification Method: Protein A purification
Size: 100ul , Concentration: 1000 ug/ml by Nanodrop;	GeneID (NCBI): 6194	CloneNo.: 1C3E10
Source: Mouse	UNIPROT ID: P62753	Recommended Dilutions: IF/ICC 1:50-1:500
Isotype: IgG2a	Full Name: ribosomal protein S6	Excitation/Emission maxima wavelengths: 588 nm / 604 nm
Immunogen Catalog Number: AG6599	Calculated MW: 29 kDa	
	Observed MW: 29-32 kDa	

Applications

Tested Applications: IF/ICC	Positive Controls: IF/ICC : HepG2 cells,
Species Specificity: Human, mouse, rat	

Background Information

Ribosomal protein S6 (RPS6), Phosphoprotein NP33. It may play an important role in controlling cell growth and proliferation through the selective translation of particular classes of mRNA. Ribosomal protein S6 is the major substrate of protein kinases in eukaryote ribosomes. The phosphorylation is stimulated by growth factors, tumor promoting agents, and mitogens. It is dephosphorylated at growth arrest. Phosphorylated at Ser-235 and Ser-236 by RPS6KA1 and RPS6KA3; phosphorylation at these sites facilitates the assembly of the preinitiation complex.

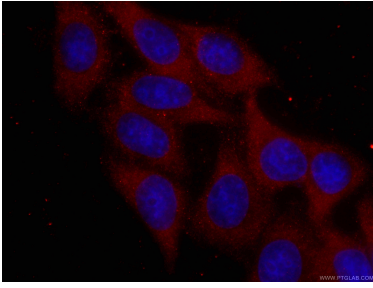
Storage

Storage:
Store at -20°C. Avoid exposure to light. Stable for one year after shipment.
Storage Buffer:
PBS with 50% Glycerol, 0.05% Proclin300, 0.5% BSA, pH 7.3.
Aliquoting is unnecessary for -20°C storage

For technical support and original validation data for this product please contact:
T: 1 (888) 4PTGLAB (1-888-478-4522) (toll free in USA), or 1(312) 455-8498 (outside USA)
E: proteintech@ptglab.com
W: ptglab.com

This product is exclusively available under Proteintech Group brand and is not available to purchase from any other manufacturer.

Selected Validation Data



Immunofluorescent analysis of (-20°C Ethanol) fixed HepG2 cells using CL594-66886 (S6 Ribosomal protein antibody) at dilution of 1:100.