

For Research Use Only

CoraLite®594-conjugated WNT2 Monoclonal antibody

Catalog Number: CL594-66656

Featured Product



Basic Information

Catalog Number:

CL594-66656

Size:

100ul , Concentration: 1000 ug/ml by
Nanodrop;

Source:

Mouse

Isotype:

IgG1

Immunogen Catalog Number:

AG25185

GenBank Accession Number:

BC029854

GeneID (NCBI):

7472

UNIPROT ID:

P09544

Full Name:

wingless-type MMTV integration site
family member 2

Calculated MW:

40 kDa

Observed MW:

36 kDa

Purification Method:

Protein G purification

CloneNo.:

3H7B10

Recommended Dilutions:

IF/ICC: 1:50-1:500

**Excitation/Emission maxima
wavelengths:**

588 nm / 604 nm

Applications

Tested Applications:

IF/ICC

Species Specificity:

human, mouse, rat

Positive Controls:

IF/ICC : MCF-7 cells,

Background Information

Wnt2 is a secreted glycoprotein that is one of the canonical Wnt ligands. The WNT gene family consists of structurally related genes which encode secreted signaling proteins. These proteins have been implicated in oncogenesis and in several developmental processes, including regulation of cell fate and patterning during embryogenesis. Wnt2 is known to directly regulate β -catenin activity, the key player in proliferation and inflammation. Recently, studies have demonstrated that Wnt2 is overexpressed in various human cancers, including esophageal, gastric, colorectal, breast, lung, cervical, and malignant glioma.

Storage

Storage:

Store at -20°C. Avoid exposure to light. Stable for one year after shipment.

Storage Buffer:

PBS with 50% glycerol, 0.05% Proclin300, 0.5% BSA, pH7.3

Aliquoting is unnecessary for -20°C storage

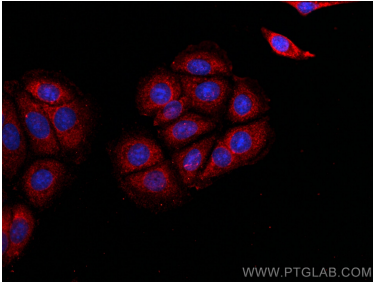
For technical support and original validation data for this product please contact:

T: 1 (888) 4PTGLAB (1-888-478-4522) (toll free
in USA), or 1(312) 455-8498 (outside USA)

E: proteintech@ptglab.com
W: ptglab.com

This product is exclusively available under Proteintech Group brand and is not available to purchase from any other manufacturer.

Selected Validation Data



Immunofluorescent analysis of (-20°C Methanol) fixed MCF-7 cells using CoraLite®594 WNT2 antibody (CL594-66656, Clone: 3H7B10) at dilution of 1:200.