

For Research Use Only

CoraLite®594-conjugated PALLD,palladin Monoclonal antibody



Catalog Number:CL594-66601

Basic Information

Catalog Number: CL594-66601	GenBank Accession Number: BC013867	Purification Method: Protein A purification
Size: 100ul , Concentration: 1000 µg/ml by Nanodrop;	GeneID (NCBI): 23022	CloneNo.: 2A1F6
Source: Mouse	UNIPROT ID: Q8WX93	Recommended Dilutions: IF-P 1:50-1:500
Isotype: IgG2a	Full Name: palladin, cytoskeletal associated protein	Excitation/Emission maxima wavelengths: 588 nm / 604 nm
Immunogen Catalog Number: AG1288	Calculated MW: 1383 aa, 151 kDa	
	Observed MW: 151 kDa	

Applications

Tested Applications: IF	Positive Controls: IF-P: mouse testis tissue,
Species Specificity: Human, rat, pig	

Storage

Storage:
Store at -20°C. Avoid exposure to light. Stable for one year after shipment.
Storage Buffer:
PBS with 50% Glycerol, 0.05% Proclin300, 0.5% BSA, pH 7.3.
Aliquoting is unnecessary for -20°C storage

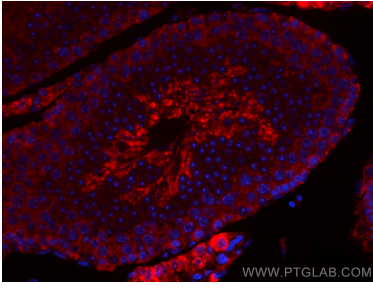
For technical support and original validation data for this product please contact:

T: 1 (888) 4PTGLAB (1-888-478-4522) (toll free
in USA), or 1(312) 455-8498 (outside USA)

E: proteintech@ptglab.com
W: ptglab.com

This product is exclusively available under Proteintech Group brand and is not available to purchase from any other manufacturer.

Selected Validation Data



Immunofluorescent analysis of (4% PFA) fixed mouse testis tissue using CoraLite®594 PALLD,palladin antibody (CL594-66601, Clone: 2A1F6) at dilution of 1:200.