

For Research Use Only

# CoraLite® Plus 594-conjugated TLR5 Monoclonal antibody



Catalog Number:CL594-66570

## Basic Information

<b>Catalog Number:</b> CL594-66570	<b>GenBank Accession Number:</b> BC109119	<b>Purification Method:</b> Protein G purification
<b>Size:</b> 100ul , Concentration: 1000 µg/ml by Nanodrop;	<b>GeneID (NCBI):</b> 7100	<b>CloneNo.:</b> 4B3D2
<b>Source:</b> Mouse	<b>Full Name:</b> toll-like receptor 5	<b>Excitation/Emission maxima wavelengths:</b> 594 nm / 615 nm
<b>Isotype:</b> IgG1	<b>Calculated MW:</b> 858 aa, 98 kDa	
<b>Immunogen Catalog Number:</b> AG13840	<b>Observed MW:</b> 100 kDa	

## Applications

**Tested Applications:**  
FC (Intra)

**Species Specificity:**  
Human, Pig, Mouse, Rat

## Background Information

TLR5 belongs to the Toll-like receptor family which are important in the innate immune response to pathogens. TLRs are highly conserved from Drosophila to humans and share structural and functional similarities. TLR5 is known to recognize bacterial flagellin from invading mobile bacteria. TLR5 acts via MYD88 and TRAF6, leading to NF-kappa-B activation, cytokine secretion and the inflammatory response. Mutations in TLR5 gene have been associated with both resistance and susceptibility to systemic lupus erythematosus, and susceptibility to Legionnaire disease.

## Storage

**Storage:**  
Store at -20°C. Avoid exposure to light. Stable for one year after shipment.

**Storage Buffer:**  
PBS with 50% Glycerol, 0.05% Proclin300, 0.5% BSA, pH 7.3.

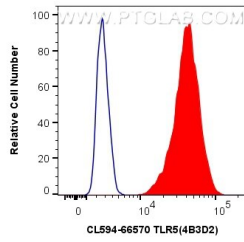
Aliquoting is unnecessary for -20°C storage

\*\*\* 20ul sizes contain 0.1% BSA

For technical support and original validation data for this product please contact:  
T: 1 (888) 4PTGLAB (1-888-478-4522) (toll free in USA), or 1(312) 455-8498 (outside USA)      E: proteintech@ptglab.com  
W: ptglab.com

This product is exclusively available under Proteintech Group brand and is not available to purchase from any other manufacturer.

## Selected Validation Data



1X10<sup>6</sup> THP-1 cells were intracellularly stained with 0.8 ug CoraLite® Plus 594 Anti-Human TLR5 (CL594-66570, Clone:4B3D2) (red), or 0.8 ug CoraLite® 594 Mouse IgG1 Isotype Control (MOPC-21) (CL594-65124, Clone: MOPC-21) (blue). Cells were fixed with 4% PFA and permeabilized with Flow Cytometry Perm Buffer (PF00011-C).