

For Research Use Only

# CoraLite®594-conjugated human IgM Monoclonal antibody

Catalog Number:CL594-66484



## Basic Information

<b>Catalog Number:</b> CL594-66484	<b>GenBank Accession Number:</b> BC009851	<b>Purification Method:</b> Protein G purification
<b>Size:</b> 100ul , Concentration: 1000 ug/ml by Nanodrop;	<b>GeneID (NCBI):</b> 3507	<b>CloneNo.:</b> 2D10B10
<b>Source:</b> Mouse	<b>Full Name:</b> immunoglobulin heavy constant mu	<b>Recommended Dilutions:</b> IF-P 1:50-1:500
<b>Isotype:</b> IgG1	<b>Calculated MW:</b> 69 kDa	<b>Excitation/Emission maxima wavelengths:</b> 588 nm / 604 nm
<b>Immunogen Catalog Number:</b> AG1459	<b>Observed MW:</b> 75 kDa	

## Applications

<b>Tested Applications:</b> IF-P	<b>Positive Controls:</b> IF-P : human appendicitis tissue, human tonsillitis tissue
<b>Species Specificity:</b> human	

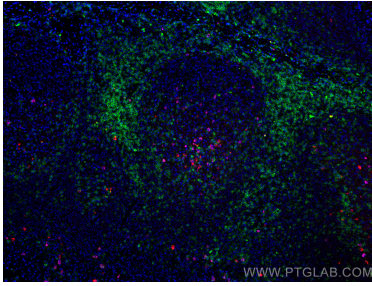
## Storage

**Storage:**  
Store at -20°C. Avoid exposure to light. Stable for one year after shipment.  
**Storage Buffer:**  
PBS with 50% Glycerol, 0.05% Proclin300, 0.5% BSA, pH 7.3.  
Aliquoting is unnecessary for -20°C storage

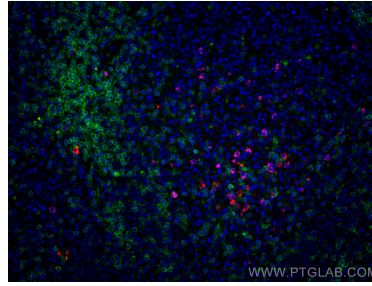
For technical support and original validation data for this product please contact:  
T: 1 (888) 4PTGLAB (1-888-478-4522) (toll free in USA), or 1(312) 455-8498 (outside USA)  
E: [proteintech@ptglab.com](mailto:proteintech@ptglab.com)  
W: [ptglab.com](http://ptglab.com)

This product is exclusively available under Proteintech Group brand and is not available to purchase from any other manufacturer.

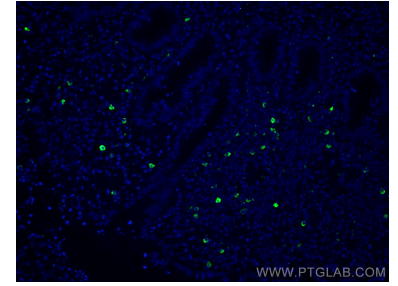
## Selected Validation Data



Immunofluorescent analysis of (4% PFA) fixed human tonsillitis tissue using CoraLite®594 human IgM antibody (CL594-66484, Clone: 2D10B10 ) at dilution of 1:100, CoraLite® Plus 488 CD3 antibody (CL488-60181, Clone: 3F3A1, green), CoraLite® Plus 647 human IgD antibody (CL647-16489, Magenta).



Immunofluorescent analysis of (4% PFA) fixed human tonsillitis tissue using CoraLite®594 human IgM antibody (CL594-66484, Clone: 2D10B10 ) at dilution of 1:100, CoraLite® Plus 488 CD3 antibody (CL488-60181, Clone: 3F3A1, green), CoraLite® Plus 647 human IgD antibody (CL647-16489, Magenta).



Immunofluorescent analysis of (4% PFA) fixed human appendicitis tissue using CoraLite®594 human IgM antibody (CL594-66484, Clone: 2D10B10 ) at dilution of 1:200.



Immunofluorescent analysis of (4% PFA) fixed human appendicitis tissue using CoraLite®594 human IgM antibody (CL594-66484, Clone: 2D10B10 ) at dilution of 1:200.