

For Research Use Only

CoraLite®594-conjugated Heavy chain of Rabbit IgG Monoclonal antibody

Catalog Number: **CL594-66467**

10 Publications

Basic Information

Catalog Number:

CL594-66467

GenBank Accession Number:

GeneID (NCBI):

Size:

100ul , Concentration: 1000 µg/ml by Nanodrop;

Source:

Mouse

Isotype:

IgG1

Full Name:

Purification Method:

Protein G purification

CloneNo.:

1C9A5

Recommended Dilutions:

IF 1:200-1:800

Excitation/Emission maxima wavelengths:

588 nm / 604 nm

Applications

Tested Applications:

IF

Cited Applications:

IF, IHC

Species Specificity:

rabbit

Cited Species:

human

Positive Controls:

IF : HeLa cells, HepG2 cells

Background Information

This antibody specifically recognizes the heavy chain of Rabbit IgG. It can't detect the heavy chain of other species. This antibody can be used as the secondary antibody which is specific to the heavy chain of Rabbit IgG. This antibody is CL594(Ex/Em 593 nm/614 nm) conjugated.

Notable Publications

Author	Pubmed ID	Journal	Application
Yinghua Zhao	34471099	Signal Transduct Target Ther	IF
Zixin Chen	31584200	J Cell Physiol	IF
Jiao Yang Lu	34761865	Small	IF

Storage

Storage:

Store at -20°C. Avoid exposure to light. Stable for one year after shipment.

Storage Buffer:

PBS with 50% Glycerol, 0.05% Proclin300, 0.5% BSA, pH 7.3.

Aliquoting is unnecessary for -20°C storage

*** 20ul sizes contain 0.1% BSA

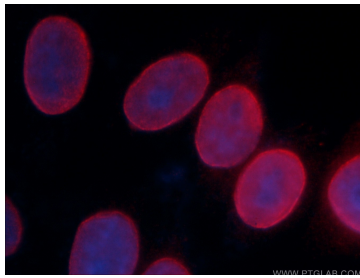
For technical support and original validation data for this product please contact:

T: 1 (888) 4PTGLAB (1-888-478-4522) (toll free in USA), or 1(312) 455-8498 (outside USA)

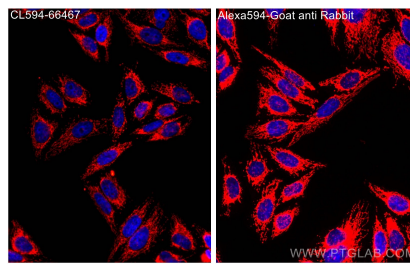
E: proteintech@ptglab.com
W: ptglab.com

This product is exclusively available under Proteintech Group brand and is not available to purchase from any other manufacturer.

Selected Validation Data



Immunofluorescent analysis of (-20°C Acetone) fixed HeLa cells using 10298-1-AP (Lamin A/C antibody) at dilution of 1:100 and CL594-66467 (CL594-Mouse anti-Rabbit IgG heavy chain) as secondary antibody with dilution 1:400. .



Immunofluorescent analysis of (4% PFA) fixed HepG2 cells using CoraLite®594 Heavy chain of Rabbit IgG antibody (CL594-66467, Clone: 1C9A5) at dilution of 1:500.