

For Research Use Only

CoraLite®594-conjugated MMP2 Monoclonal antibody

Catalog Number:CL594-66366

Featured Product



Basic Information

Catalog Number:

CL594-66366

Size:

100ul , Concentration: 1000 µg/ml by
Nanodrop;

Source:

Mouse

Isotype:

IgG1

Immunogen Catalog Number:

AG25039

GenBank Accession Number:

BC002576

GeneID (NCBI):

4313

UNIPROT ID:

P08253

Full Name:

matrix metalloproteinase 2
(gelatinase A, 72kDa gelatinase,
72kDa type IV collagenase)

Calculated MW:

72 kDa

Observed MW:

55-74 kDa

Purification Method:

Protein G purification

CloneNo.:

2B10D1

**Excitation/Emission maxima
wavelengths:**

588 nm / 604 nm

Applications

Tested Applications:

FC (Intra)

Species Specificity:

human, mouse, rat, pig

Background Information

MMP2, also named as CLG4A, Gelatinase Am, TBE-1 and PEX, belongs to the peptidase M10A family. It is ubiquitous metalloproteinase that is involved in diverse functions such as remodeling of the vasculature, angiogenesis, tissue repair, tumor invasion, inflammation, and atherosclerotic plaque rupture. MMP2 contributes to myocardial oxidative stress by regulating the activity of GSK3beta. It cleaves GSK3beta in vitro. MMP2 can be cleaved into PEX chain (~60kd). Western blot analysis showed that the 72 kDa and 62 kDa proteinase activities were pro-MMP2 and the active enzyme, respectively (PMID:11112697).

Storage

Storage:

Store at -20°C. Avoid exposure to light. Stable for one year after shipment.

Storage Buffer:

PBS with 50% Glycerol, 0.05% Proclin300, 0.5% BSA, pH 7.3.

Aliquoting is unnecessary for -20°C storage

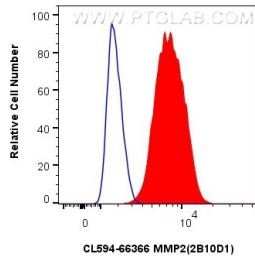
For technical support and original validation data for this product please contact:

T: 1 (888) 4PTGLAB (1-888-478-4522) (toll free
in USA), or 1(312) 455-8498 (outside USA)

E: proteintech@ptglab.com
W: ptglab.com

This product is exclusively available under Proteintech Group brand and is not available to purchase from any other manufacturer.

Selected Validation Data



1x10⁶ PC-3 cells were intracellularly stained with 0.4 ug Coralite®594 Mmp2 Monoclonal Antibody (CL594-66366, Clone:2B10D1)(red), or 0.4 ug Coralite®594 Mouse IgG1 Isotype Control (1F8D3) (CL594-66360-1, Clone: 1F8D3) (blue). Cells were fixed with 4% PFA and permeabilized with Flow Cytometry Perm Buffer (PF00011-C).