

For Research Use Only

CoraLite®594-conjugated Gamma Tubulin Monoclonal antibody



Catalog Number:CL594-66320

Basic Information

Catalog Number: CL594-66320	GenBank Accession Number: BC000619	Purification Method: Protein A purification
Size: 100ul , Concentration: 1000 µg/ml by Nanodrop;	GeneID (NCBI): 7283	CloneNo.: 3F9H8
Source: Mouse	Full Name: tubulin, gamma 1	Recommended Dilutions: IF 1:50-1:500
Isotype: IgG2a	Calculated MW: 51 kDa	Excitation/Emission maxima wavelengths: 593 nm / 614 nm
Immunogen Catalog Number: AG23913	Observed MW: 48-55 kDa	

Applications

Tested Applications: FC (Intra), IF	Positive Controls: IF : MDCK cells,
Species Specificity: human, Canine, mouse, rat	

Background Information

Gamma tubulin is a member of tubulin superfamily and is a key component required for microtubule nucleation and stabilization. It is concentrated at the pericentriolar material of centrosomes in interphase cells, predominantly on spindle poles in mitotic cells, while found in midbodies during cytokinesis. Overexpression of gamma tubulin has been found in various cancers including breast cancer and gliomas. This antibody can well label the centrosome structure.

Storage

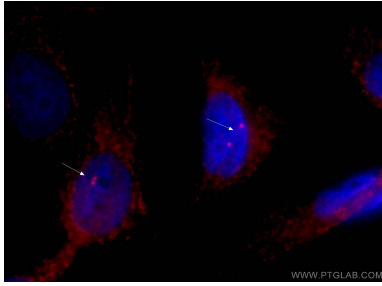
Storage:
Store at -20°C. Avoid exposure to light. Stable for one year after shipment.
Storage Buffer:
PBS with 50% Glycerol, 0.05% Proclin300, 0.5% BSA, pH 7.3.
Aliquoting is unnecessary for -20°C storage

*** 20ul sizes contain 0.1% BSA

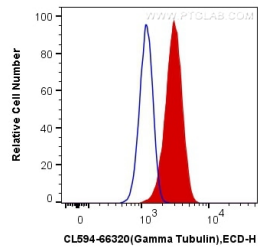
For technical support and original validation data for this product please contact:
T: 1 (888) 4PTGLAB (1-888-478-4522) (toll free in USA), or 1(312) 455-8498 (outside USA)
E: proteintech@ptglab.com
W: ptglab.com

This product is exclusively available under Proteintech Group brand and is not available to purchase from any other manufacturer.

Selected Validation Data



Immunofluorescent analysis of (-20°C Ethanol) fixed MDCK cells using CL594-66320 (gamma tubulin antibody) at dilution of 1:50.



1X10⁶ HeLa cells were intracellularly stained with 0.8 ug CoraLite®594 Anti-Human Gamma Tubulin (CL594-66320, Clone:3F9H8) (red), or 0.8 ug Mouse IgG2a Isotype Control (CL594-66360-2, Clone: K11A1B2A2) (blue). Cells were fixed with 4% PFA and permeabilized with Flow Cytometry Perm Buffer (PF00011-C).