

For Research Use Only

CoraLite®594-conjugated RPS3 Monoclonal antibody



Catalog Number:CL594-66046

Featured Product

Basic Information

Catalog Number: CL594-66046	GenBank Accession Number: BC003137	Purification Method: Protein A purification
Size: 100ul , Concentration: 2000 µg/ml by Nanodrop;	GeneID (NCBI): 6188	CloneNo.: 2G7H4
Source: Mouse	UNIPROT ID: P23396	Recommended Dilutions: IF/ICC 1:50-1:500
Isotype: IgG2a	Full Name: ribosomal protein S3	Excitation/Emission maxima wavelengths: 588 nm / 604 nm
Immunogen Catalog Number: AG7515	Calculated MW: 27 kDa	
	Observed MW: 33 kDa	

Applications

Tested Applications: IF/ICC	Positive Controls: IF/ICC : HepG2 cells,
Species Specificity: human, mouse, rat	

Background Information

40S ribosomal protein S3 (RPS3), also named as SW-cl.26, is a 243 amino acid protein, which contains one KH type-2 domain and belongs to the ribosomal protein S3P family. RPS3 localizes in the cytoplasm. RPS3 is identified in a IGF2BP1-dependent mRNP granule complex, which contains untranslated mRNAs. RPS3 plays a role in repairing various DNA damage acting as a repair UV endonuclease. Nuclear accumulation of RPS3 results in an increase in DNA repair activity to some extent, thereby sustaining neuronal survival. The calculated molecular weight of RPS3 is 26 kDa, but the modified RPS3 is about 33 kDa.

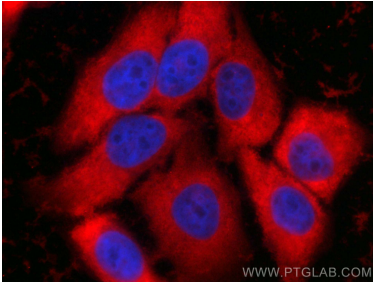
Storage

Storage:
Store at -20°C. Avoid exposure to light. Stable for one year after shipment.
Storage Buffer:
PBS with 50% Glycerol, 0.05% Proclin300, 0.5% BSA, pH 7.3.
Aliquoting is unnecessary for -20°C storage

For technical support and original validation data for this product please contact:
T: 1 (888) 4PTGLAB (1-888-478-4522) (toll free in USA), or 1(312) 455-8498 (outside USA)
E: proteintech@ptglab.com
W: ptglab.com

This product is exclusively available under Proteintech Group brand and is not available to purchase from any other manufacturer.

Selected Validation Data



Immunofluorescent analysis of (-20°C Ethanol) fixed HepG2 cells using CoraLite®594 RPS3 antibody (CL594-66046, Clone: 2G7H4) at dilution of 1:200.