

For Research Use Only

# CoraLite®594-conjugated HSP60 Monoclonal antibody



Catalog Number: CL594-66041

1 Publications

## Basic Information

Catalog Number: CL594-66041	GenBank Accession Number: BC003030	Purification Method: Protein G purification
Size: 100ul , Concentration: 1000 µg/ml by Nanodrop;	GeneID (NCBI): 3329	CloneNo.: 2F10E7
Source: Mouse	Full Name: heat shock 60kDa protein 1 (chaperonin)	Recommended Dilutions: IF 1:50-1:500
Isotype: IgG1	Calculated MW: 61 kDa	Excitation/Emission maxima wavelengths: 588 nm / 604 nm
Immunogen Catalog Number: AG7848	Observed MW: 60 kDa	

## Applications

Tested Applications: IF	Positive Controls: IF : HepG2 cells,
Cited Applications: FC	
Species Specificity: human, mouse, rat	
Cited Species: mouse	

## Background Information

HSPD1, also known as HSP60, belongs to the chaperonin family and acts as a chaperone to enhance cell survival under physiological stresses. Hsp60 has been shown to be connected with many aspects of cell functions such as protein folding and assembling of polypeptide chains in mitochondria. Recently it has been reported that HSP60 is associated with apoptosis or inhibition of cancer cell growth. (21822415)

## Notable Publications

Author	Pubmed ID	Journal	Application
Yavuz F Yazicioglu	37095377	Nat Immunol	FC

## Storage

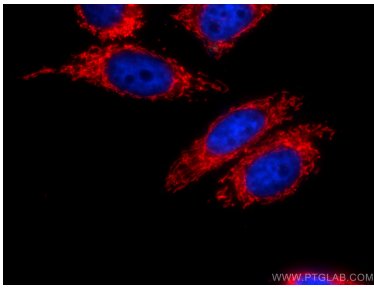
Storage:  
Store at -20°C. Avoid exposure to light. Stable for one year after shipment.  
Storage Buffer:  
PBS with 50% Glycerol, 0.05% Proclin300, 0.5% BSA, pH 7.3.  
Aliquoting is unnecessary for -20°C storage

\*\*\* 20ul sizes contain 0.1% BSA

For technical support and original validation data for this product please contact:  
T: 1 (888) 4PTGLAB (1-888-478-4522) (toll free in USA), or 1(312) 455-8498 (outside USA)  
E: [proteintech@ptglab.com](mailto:proteintech@ptglab.com)  
W: [ptglab.com](http://ptglab.com)

This product is exclusively available under Proteintech Group brand and is not available to purchase from any other manufacturer.

## Selected Validation Data



Immunofluorescent analysis of (4% PFA) fixed HepG2 cells using CL594-66041 (HSP60 antibody) at dilution of 1:50.