

For Research Use Only

CoraLite®594 Anti-Human CD62P (AK4) Mouse IgG2a Recombinant Antibody

Catalog Number:CL594-65587



Basic Information

Catalog Number:

CL594-65587

Size:

100tests , 5 ul/test

Source:

Mouse

Isotype:

IgG2a

GenBank Accession Number:

BC028067

GeneID (NCBI):

6403

Full Name:

selectin P (granule membrane protein 140kDa, antigen CD62)

Calculated MW:

830 aa, 91 kDa

Purification Method:

Protein A purification

CloneNo.:

AK4

Excitation/Emission maxima

wavelengths:

588 nm / 604 nm

Applications

Tested Applications:

FC

Species Specificity:

human

Background Information

P-selectin, also known as GMP140 or CD62P, is a transmembrane glycoprotein that mediates the interaction of activated endothelial cells or platelets with leukocytes. It is an adhesion molecule involved in the pathogenesis of inflammation, thrombosis, and oncogenesis. P-selectin is stored in the alpha-granules of platelets and Weibel-Palade bodies of endothelial cells. Upon cell activation by agonists, P-selectin is transported rapidly to the cell surface.

Storage

Storage:

Store at 2-8°C. Avoid exposure to light. Stable for one year after shipment.

Storage Buffer:

PBS with 0.09% sodium azide and 0.5% BSA.

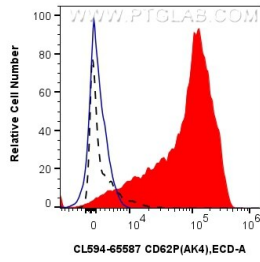
For technical support and original validation data for this product please contact:

T: 1 (888) 4PTGLAB (1-888-478-4522) (toll free in USA), or 1(312) 455-8498 (outside USA)

E: proteintech@ptglab.com
W: ptglab.com

This product is exclusively available under Proteintech Group brand and is not available to purchase from any other manufacturer.

Selected Validation Data



1x10⁶ Thrombin treated human peripheral blood platelets were surface stained with 5 ul CoraLite®594 Anti-Human CD62P (AK4) Mouse IgG2a Recombinant Antibody (CL594-65587, Clone: AK4) (red), or CoraLite®594 Mouse IgG2a Isotype Control (C1.18.4) (CL594-65208, Clone: C1.18.4) (blue). 1x10⁶ untreated human peripheral blood platelets were surface stained with 5 ul CoraLite®594 Anti-Human CD62P (AK4) Mouse IgG2a Recombinant Antibody (CL594-65587, Clone:

