

For Research Use Only

# CoraLite® Plus 594 Anti-Human CD20 (2H7) Mouse IgG2a Recombinant Antibody



Catalog Number: **CL594-65575**

## Basic Information

<b>Catalog Number:</b> CL594-65575	<b>GenBank Accession Number:</b> BC002807	<b>Purification Method:</b> Protein A purification
<b>Size:</b> 100tests , 5 ul/test	<b>GeneID (NCBI):</b> 931	<b>CloneNo.:</b> 2H7
<b>Source:</b> Mouse	<b>Full Name:</b> membrane-spanning 4-domains, subfamily A, member 1	<b>Excitation/Emission maxima wavelengths:</b> 594 nm / 615 nm
<b>Isotype:</b> IgG2a	<b>Calculated MW:</b> 297 aa, 33 kDa	

## Applications

**Tested Applications:**  
FC

**Species Specificity:**  
human

## Background Information

CD20 is a 33-37 kDa transmembrane phosphoprotein belonging to the membrane-spanning 4A family (PMID: 3260267; 16785532). CD20 is a B-lymphocyte surface molecule that is widely expressed during B-cell ontogeny, from early pre-B-cell developmental stages until final differentiation into plasma cells (PMID: 7524522). CD20 functions as calcium-permeable cation channel (PMID: 7684739). It is involved in the regulation of B-cell activation, proliferation and differentiation (PMID: 7524522).

## Storage

**Storage:**  
Store at 2-8°C. Avoid exposure to light.  
**Storage Buffer:**  
PBS with 0.09% sodium azide and 0.5% BSA.

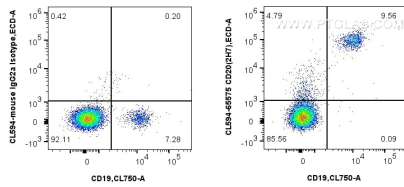
For technical support and original validation data for this product please contact:

T: 1 (888) 4PTGLAB (1-888-478-4522) (toll free  
in USA), or 1(312) 455-8498 (outside USA)

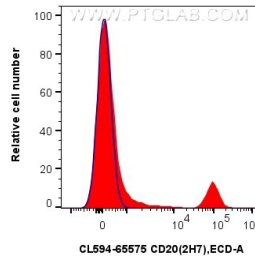
E: [proteintech@ptglab.com](mailto:proteintech@ptglab.com)  
W: [ptglab.com](http://ptglab.com)

**This product is exclusively available under Proteintech Group brand and is not available to purchase from any other manufacturer.**

## Selected Validation Data



1x10<sup>6</sup> human PBMCs were surface stained with CoraLite® Plus 750 Anti-Human CD19 and 5 ul CoraLite® Plus 594 Anti-Human CD20 (2H7) Mouse IgG2a Recombinant Antibody (CL594-65575, Clone:2H7) or CoraLite®594 Mouse IgG2a Isotype Control (C1.18.4) (CL594-65208, Clone: C1.18.4). Cells were not fixed.



1x10<sup>6</sup> human PBMCs were surface stained with 5 ul CoraLite® Plus 594 Anti-Human CD20 (2H7) Mouse IgG2a Recombinant Antibody (CL594-65575, Clone: 2H7) (red) or CoraLite®594 Mouse IgG2a Isotype Control (C1.18.4) (CL594-65208, Clone: C1.18.4) (blue). Cells were not fixed.