

For Research Use Only

CoraLite® Plus 594 Anti-Human CD33 (WM53)



Catalog Number: **CL594-65272**

Basic Information

Catalog Number: CL594-65272	GenBank Accession Number: BC028152	Purification Method: Affinity purification
Size: 100tests , 5 µl/test	GeneID (NCBI): 945	CloneNo.: WM53
Source: Mouse	Full Name: CD33 molecule	Excitation/Emission maxima wavelengths: 594 nm / 615 nm
Isotype: IgG1, kappa	Calculated MW: 364 aa, 40 kDa	

Applications

Tested Applications:
FC

Species Specificity:
human

Background Information

CD33, also referred to as Siglec-3, is a 67-kDa glycosylated transmembrane protein of sialic acid-binding immunoglobulin-like lectin (siglec) family. CD33 is expressed on monocytes, myeloid progenitors, granulocytes, mast cells, some T cells. It may mediate cell-to-cell adhesion and act as a receptor that inhibits the proliferation of normal and leukemic myeloid cells.

Storage

Storage:
Store at 2-8°C. Avoid exposure to light.

Storage Buffer:
PBS with 0.09% sodium azide and 0.5% BSA.

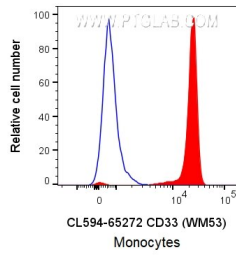
For technical support and original validation data for this product please contact:

T: 1 (888) 4PTGLAB (1-888-478-4522) (toll free in USA), or 1(312) 455-8498 (outside USA)

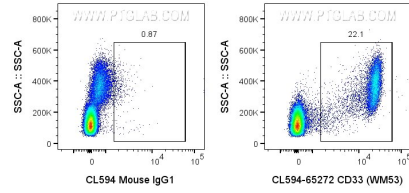
E: proteintech@ptglab.com
W: ptglab.com

This product is exclusively available under Proteintech Group brand and is not available to purchase from any other manufacturer.

Selected Validation Data



1x10⁶ FC receptor blocked human PBMCs were surface stained with 5 ul CoraLite® Plus 594 Anti-Human CD33 (CL594-65272, Clone: WM53) (red) or CoraLite®594 Mouse IgG1 Isotype Control (blue). Cells were not fixed. Monocytes were gated.



1x10⁶ FC receptor blocked human PBMCs were surface stained with 5 ul CoraLite® Plus 594 Anti-Human CD33 (CL594-65272, Clone: WM53) or CoraLite®594 Mouse IgG1 Isotype Control. Cells were not fixed. Lymphocytes and monocytes were gated.