

For Research Use Only

# CoraLite® Plus 594 Anti-Human CD244 (2B4.69)



Catalog Number: CL594-65270

## Basic Information

Catalog Number:

CL594-65270

Size:

100 tests, 5 ul/test

Source:

Mouse

Isotype:

IgG1

GenBank Accession Number:

BC028073

GeneID (NCBI):

51744

Full Name:

CD244 molecule, natural killer cell  
receptor 2B4

Purification Method:

Affinity purification

CloneNo.:

2B4.69

Excitation/Emission maxima  
wavelengths:

594 nm / 615 nm

## Applications

Tested Applications:

FC

Species Specificity:

Human

## Background Information

CD244, also known as SLAMF4 or 2B4, is a type I transmembrane glycoprotein belonging to the signaling lymphocyte activation molecule (SLAM) family. It consists of an extracellular segment with two immunoglobulin (Ig)-like domains, a transmembrane region, and a cytoplasmic domain containing tyrosine-based motifs (PMID: 9841922; 30546369). CD244 is present on natural killer (NK) cells,  $\gamma\delta$  T cells, a subset of CD8+ T cells, monocytes, basophils, dendritic cells, and myeloid-derived suppressor cells (MDSCs) (PMID: 30546369). It binds to CD48 with high affinity and transmits stimulatory or inhibitory signals that regulate immune function (PMID: 9841922; 18523281).

## Storage

Storage:

Store at 2-8°C. Avoid exposure to light.

Storage Buffer:

PBS with 0.09% sodium azide and 0.5% BSA.

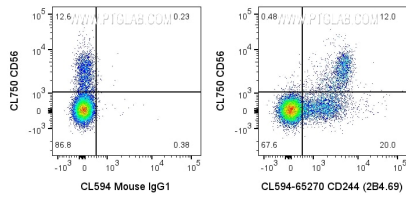
For technical support and original validation data for this product please contact:

T: 1 (888) 4PTGLAB (1-888-478-4522) (toll free  
in USA), or 1(312) 455-8498 (outside USA)

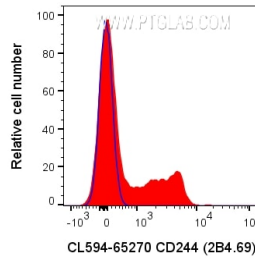
E: [proteintech@ptglab.com](mailto:proteintech@ptglab.com)  
W: [ptglab.com](http://ptglab.com)

This product is exclusively available under Proteintech Group brand and is not available to purchase from any other manufacturer.

## Selected Validation Data



$1 \times 10^6$  human PBMCs were surface stained with CL750 Anti-Human CD56 and 5  $\mu$ l CoraLite® Plus 594 Anti-Human CD244 (2B4.69) (CL594-65270) or CoraLite®594 Mouse IgG1 Isotype Control. Cells were not fixed. Lymphocytes were gated.



$1 \times 10^6$  human PBMCs were surface stained with 5  $\mu$ l CoraLite® Plus 594 Anti-Human CD244 (2B4.69) (CL594-65270) or CoraLite®594 Mouse IgG1 Isotype Control. Cells were not fixed. Lymphocytes were gated.