

For Research Use Only

CoraLite® Plus 594 Anti-Human CD226 (11A8)



Catalog Number: CL594-65247

Basic Information

| | | |
|---------------------------------------|--|---|
| Catalog Number: CL594-65247 | GenBank Accession Number: BC074787 | Purification Method: N/A |
| Size: 100tests , 5 ul/test | GeneID (NCBI): 10666 | CloneNo.: 11A8 |
| Source: Mouse | ENSEMBL Gene ID: ENSG00000150637 | Excitation/Emission maxima wavelengths: 594 nm / 615 nm |
| Isotype: IgG1, kappa | UNIPROT ID: Q15762 | |
| | Full Name: CD226 molecule | |
| | Calculated MW: 336 aa, 39 kDa | |

Applications

Tested Applications:
FC
Species Specificity:
Human

Background Information

CD226 (DNAM-1) is a ~65 kDa glycoprotein expressed on the surface of NK cells, platelets, monocytes and a subset of T cells. It is a member of the Ig-superfamily containing 2 Ig-like domains of the V-set. CD226 mediates cellular adhesion of platelets and megakaryocytic cells to vascular endothelial cells. The protein also plays a role in megakaryocytic cell maturation. Interactions of CD226 and its ligands, CD155 and CD112, induce NK and T cell-mediated cytotoxicity and cytokine secretion (PMID: 15039383).

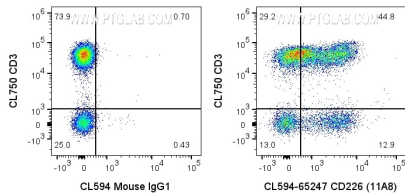
Storage

Storage:
Store at 2-8°C. Avoid exposure to light.
Storage Buffer:
PBS with 0.09% sodium azide and 0.5% BSA.

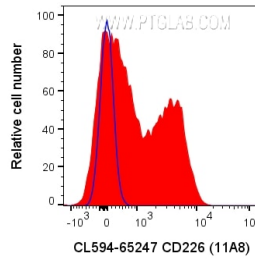
For technical support and original validation data for this product please contact:
T: 1 (888) 4PTGLAB (1-888-478-4522) (toll free in USA), or 1(312) 455-8498 (outside USA) E: proteintech@ptglab.com
W: ptglab.com

This product is exclusively available under Proteintech Group brand and is not available to purchase from any other manufacturer.

Selected Validation Data



1x10⁶ human PBMCs were surface stained with CL750 Anti-Human CD3 and 5 ul CoraLite® Plus 594 Anti-Human CD226 (11A8) (CL594-65247) or CoraLite®594 Mouse IgG1 Isotype Control. Cells were not fixed. Lymphocytes were gated.



1x10⁶ human PBMCs were surface stained with 5 ul CoraLite® Plus 594 Anti-Human CD226 (11A8) (CL594-65247) or CoraLite®594 Mouse IgG1 Isotype Control. Cells were not fixed. Lymphocytes were gated.