

For Research Use Only

# CoraLite® Plus 594 Anti-Human CD29 (TS2/16)

Catalog Number: CL594-65191



## Basic Information

**Catalog Number:**

CL594-65191

**Size:**

100tests, 5 µl/test

**Source:**

Mouse

**Isotype:**

IgG1, kappa

**GenBank Accession Number:**

BC020057

**GeneID (NCBI):**

3688

**ENSEMBL Gene ID:**

ENSG00000150093

**UNIPROT ID:**

P05556

**Full Name:**

integrin, beta 1 (fibronectin receptor, beta polypeptide, antigen CD29 includes MDF2, MSK12)

**Calculated MW:**

88 kDa

**Purification Method:**

Protein G purification

**CloneNo.:**

TS2/16

**Excitation/Emission maxima wavelengths:**

594 nm / 615 nm

## Applications

**Tested Applications:**

FC

**Species Specificity:**

human

## Background Information

Integrin beta-1 (ITGB1), also named as CD29, is a 130 kDa single chain type I glycoprotein that is expressed in a heterodimeric complex with one of six distinct  $\alpha$  subunits, comprising the very late activation antigen (VLA) subfamily of adhesion receptors. It is one of the essential surface molecules expressed on human MSC from bone marrow and other sources. The  $\beta$ 1 subunit is also broadly expressed on lymphocytes and monocytes, weakly expressed on granulocytes, and not expressed on erythrocytes. These receptors are involved in a variety of cell-cell and cell-matrix interactions.

## Storage

**Storage:**

Store at 2-8°C. Avoid exposure to light. Stable for one year after shipment.

**Storage Buffer:**

PBS with 0.09% sodium azide and 0.5% BSA.

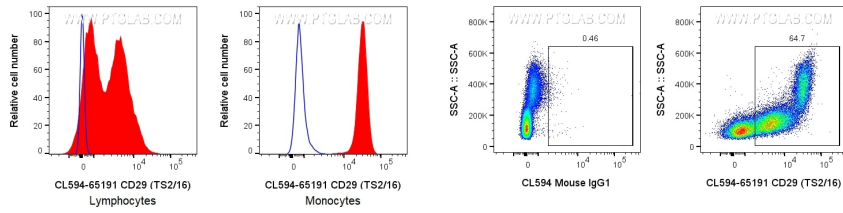
For technical support and original validation data for this product please contact:

T: 1 (888) 4PTGLAB (1-888-478-4522) (toll free in USA), or 1(312) 455-8498 (outside USA)

E: [proteintech@ptglab.com](mailto:proteintech@ptglab.com)  
W: [ptglab.com](http://ptglab.com)

**This product is exclusively available under Proteintech Group brand and is not available to purchase from any other manufacturer.**

## Selected Validation Data



1x10<sup>6</sup> FC receptor blocked human PBMCs were surface stained with 5 ul CoraLite®594 Anti-Human CD29 (CL594-65191, Clone: TS2/16) (red) or CoraLite®594 Mouse IgG1 Isotype Control (blue). Cells were not fixed. Lymphocytes and monocytes were gated.

1x10<sup>6</sup> FC receptor blocked human PBMCs were surface stained with 5 ul CoraLite®594 Anti-Human CD29 (CL594-65191, Clone: TS2/16) or CoraLite®594 Mouse IgG1 Isotype Control. Cells were not fixed. Lymphocytes and monocytes were gated.