

For Research Use Only

CoraLite® Plus 594 Anti-Human CD62L (DREG56)

Catalog Number: CL594-65167



Basic Information

Catalog Number:

CL594-65167

Size:

100 tests, 5 ul/test

Source:

Mouse

Isotype:

IgG1, kappa

GenBank Accession Number:

BC020758

GeneID (NCBI):

6402

ENSEMBL Gene ID:

ENSG00000188404

UNIPROT ID:

P14151

Full Name:

selectin L

Calculated MW:

42 kDa

Purification Method:

Affinity purification

CloneNo.:

DREG56

Excitation/Emission maxima wavelengths:

594 nm / 615 nm

Applications

Tested Applications:

FC

Species Specificity:

human

Background Information

CD62L, also known as L-selectin or SELL, is a member of the selectin family of adhesion molecules that also include CD62E (E-selectin) and CD62P (P-selectin) (PMID: 2663882, 2473156, 1382078). CD62L is a highly glycosylated protein of 95-105 kDa on neutrophils and 74 kDa on lymphocytes (PMID: 1382078; 1694883, 1695155). CD62L is expressed on the surface of most leukocytes, including lymphocytes, neutrophils, monocytes, eosinophils, hematopoietic progenitor cells, and immature thymocytes (PMID: 1694883, 1688580). It mediates the binding of lymphocytes to high endothelial venules (HEV) of peripheral lymph nodes through interactions with a constitutively expressed ligand, and is also involved in lymphocyte, neutrophil, and monocyte attachment to endothelium at sites of inflammation (PMID: 1382078).

Storage

Storage:

Store at 2-8°C. Avoid exposure to light. Stable for one year after shipment.

Storage Buffer:

PBS with 0.09% sodium azide and 0.5% BSA.

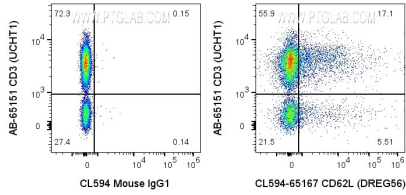
For technical support and original validation data for this product please contact:

T: 1 (888) 4PTGLAB (1-888-478-4522) (toll free in USA), or 1(312) 455-8498 (outside USA)

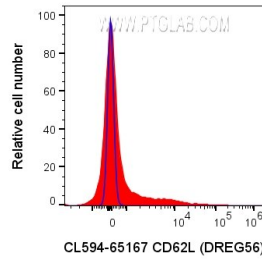
E: proteintech@ptglab.com
W: ptglab.com

This product is exclusively available under Proteintech Group brand and is not available to purchase from any other manufacturer.

Selected Validation Data



1x10⁶ human PBMCs were surface stained with Atlantic Blue™ Anti-Human CD3 (AB-65151, Clone: UCHT1) and 5 ul CoraLite® Plus 594 Anti-Human CD62L (CL594-65167, Clone: DREG56) or CoraLite® 594 Mouse IgG1 Isotype Control (CL594-65124, Clone: MOPC-21). Cells were not fixed. Lymphocytes were gated.



1x10⁶ human PBMCs were surface stained with 5 ul CoraLite® Plus 594 Anti-Human CD62L (CL594-65167, Clone: DREG56) or CoraLite® 594 Mouse IgG1 Isotype Control (CL594-65124, Clone: MOPC-21). Cells were not fixed. Lymphocytes were gated.