

For Research Use Only

# CoraLite® Plus 594 Anti-Human CD3 (OKT3)

Catalog Number: CL594-65133



## Basic Information

**Catalog Number:**

CL594-65133

**Size:**

100tests, 5 ul/test

**Source:**

Mouse

**Isotype:**

IgG2a, kappa

**GenBank Accession Number:**

BC049847

**GeneID (NCBI):**

916

**ENSEMBL Gene ID:**

ENSG00000198851

**UNIPROT ID:**

P07766

**Full Name:**

CD3e molecule, epsilon (CD3-TCR complex)

**Calculated MW:**

207 aa, 23 kDa

**Purification Method:**

Affinity purification

**CloneNo.:**

OKT3

**Excitation/Emission maxima wavelengths:**

594 nm / 615 nm

## Applications

**Tested Applications:**

FC

**Species Specificity:**

human

## Background Information

CD3 is a multimeric protein associated with the T-cell receptor (TCR) to form a complex involved in antigen recognition and signal transduction (PMID: 15885124). CD3 is composed of CD3 $\gamma$ ,  $\delta$ ,  $\epsilon$ , and  $\zeta$  chains (PMID: 1826255). It is expressed by thymocytes in a developmentally regulated manner, T cells, and some NK cells (PMID: 3289580). The TCR recognizes antigens bound to major histocompatibility complex (MHC) molecules. TCR-mediated peptide-MHC recognition is transmitted to the CD3 complex, leading to the intracellular signal transduction (PMID: 11985657).

## Storage

**Storage:**

Store at 2-8°C. Avoid exposure to light. Stable for one year after shipment.

**Storage Buffer:**

PBS with 0.09% sodium azide and 0.5% BSA.

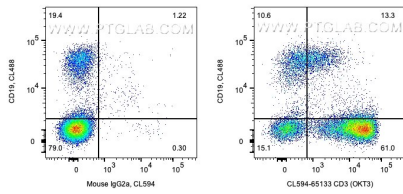
For technical support and original validation data for this product please contact:

T: 1 (888) 4PTGLAB (1-888-478-4522) (toll free in USA), or 1(312) 455-8498 (outside USA)

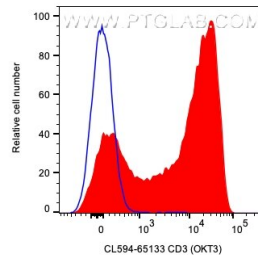
E: [proteintech@ptglab.com](mailto:proteintech@ptglab.com)  
W: [ptglab.com](http://ptglab.com)

This product is exclusively available under Proteintech Group brand and is not available to purchase from any other manufacturer.

## Selected Validation Data



1x10<sup>6</sup> human PBMCs were surface stained with CL488 Anti-Human CD19 (CL488-65197) and 5 ul CoraLite® Plus 594 Anti-Human CD3 (CL594-65133, Clone:OKT3) or CoraLite® 594 Mouse IgG2a Isotype Control (CL594-65208, Clone: C1.18.4). Cells were not fixed. Lymphocytes were gated.



1x10<sup>6</sup> human PBMCs were surface stained with 5 ul CoraLite® Plus 594 Anti-Human CD3 (CL594-65133, Clone:OKT3) or CoraLite® 594 Mouse IgG2a Isotype Control (CL594-65208, Clone: C1.18.4). Cells were not fixed. Lymphocytes were gated.