

For Research Use Only

CoraLite®594-conjugated IFITM1-Specific Monoclonal antibody

Catalog Number:CL594-60074

Featured Product



Basic Information

Catalog Number: CL594-60074	GenBank Accession Number: BC000897	Purification Method: Protein A purification
Size: 100ul , Concentration: 1000 ug/ml by Nanodrop;	GeneID (NCBI): 8519	CloneNo.: 5B5E2
Source: Mouse	Full Name: interferon induced transmembrane protein 1 (9-27)	Recommended Dilutions: IF/ICC 1:50-1:500
Isotype: IgG2a	Calculated MW: 14 kDa	Excitation/Emission maxima wavelengths: 588 nm / 604 nm
Immunogen Catalog Number: AG2320	Observed MW: 14 kDa, 17 kDa	

Applications

Tested Applications: IF/ICC	Positive Controls: IF/ICC : K-562 cells,
Species Specificity: human	

Background Information

IFITM1(interferon induced transmembrane protein), also named DSPA2a and interferon-induced protein 17 (IFI17), belongs to the CD225 family. It has two transmembrane domain and serves as an IFN-induced antiviral protein that mediates cellular innate immunity to at least three major human pathogens, influenza A H1N1 virus, West Nile virus (WNV), and dengue virus , by inhibiting the early steps of replication. IFITM proteins are recently identified as viral restriction factors that inhibit infection mediated by the influenza A virus (IAV) hemagglutinin (HA) protein. Also they serve as important components of the innate immune system to restrict HIV-1 infection. 60074-1-Ig is a mouse monoclonal antibody which specifically recognizing IFITM1 but not IFITM2 or IFITM3.

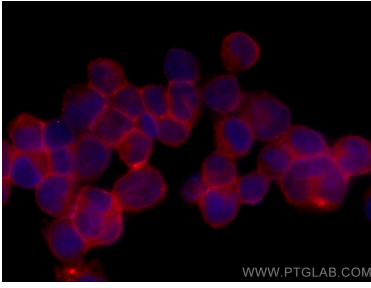
Storage

Storage:
Store at -20°C. Avoid exposure to light. Stable for one year after shipment.
Storage Buffer:
PBS with 50% Glycerol, 0.05% Proclin300, 0.5% BSA, pH 7.3.
Aliquoting is unnecessary for -20°C storage

For technical support and original validation data for this product please contact:
T: 1 (888) 4PTGLAB (1-888-478-4522) (toll free in USA), or 1(312) 455-8498 (outside USA) E: proteintech@ptglab.com
W: ptglab.com

This product is exclusively available under Proteintech Group brand and is not available to purchase from any other manufacturer.

Selected Validation Data



Immunofluorescent analysis of (4% PFA) fixed K-562 cells using CoraLite®594 IFITM1-Specific antibody (CL594-60074, Clone: 5B5E2) at dilution of 1:200.