

For Research Use Only

CoraLite®594-conjugated IL-1RL1/ST2 Polyclonal antibody

Catalog Number:CL594-30194



Basic Information

Catalog Number:

CL594-30194

Size:

100ul , Concentration: 1000 µg/ml by

Nanodrop;

Source:

Rabbit

Isotype:

IgG

GenBank Accession Number:

BC030975

GeneID (NCBI):

9173

UNIPROT ID:

Q01638

Full Name:

interleukin 1 receptor-like 1

Calculated MW:

63 kDa, 37 kDa, 30 kDa

Purification Method:

Antigen affinity purification

Excitation/Emission maxima
wavelengths:

588 nm / 604 nm

Applications

Tested Applications:

FC (Intra)

Species Specificity:

human

Background Information

ST2, also known as IL1RL1, is a member of the IL-1 superfamily and serves as the receptor for IL-33. It plays a major role in immune and inflammatory responses. ST2 is expressed by various types of immune cells including Th2 cells, mast cells, type 2 innate lymphoid cells, eosinophils, basophils, NK cells, and non-immune cells, including cardiomyocytes. Two forms of ST2 exist: a membrane-bound form and a soluble form (sST2). The membrane-bound form activates the MyD88/NF-κB signaling pathway to enhance mast cell, Th2, regulatory T cell (Treg), and innate lymphoid cell type 2 functions. sST2 acts as a decoy receptor. (PMID: 27055914; 23999434; 28484466)

Storage

Storage:

Store at -20°C. Avoid exposure to light. Stable for one year after shipment.

Storage Buffer:

PBS with 50% Glycerol, 0.05% Proclin300, 0.5% BSA, pH 7.3.

Aliquoting is unnecessary for -20°C storage

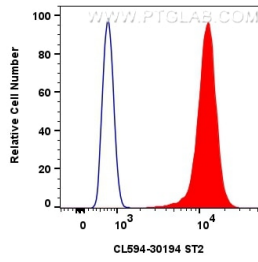
For technical support and original validation data for this product please contact:

T: 1 (888) 4PTGLAB (1-888-478-4522) (toll free
in USA), or 1(312) 455-8498 (outside USA)

E: proteintech@ptglab.com
W: ptglab.com

This product is exclusively available under Proteintech Group brand and is not available to purchase from any other manufacturer.

Selected Validation Data



1x10⁶ HEK-293 cells were intracellularly stained with 0.8 ug Coralite®594 IL-1RL1/ST2 Polyclonal Antibody (CL594-30194)(red), or 0.8 ug CoraLite®594-conjugated Rabbit IgG control Rabbit PolyAb (CL594-30000) (blue). Cells were fixed with 4% PFA and permeabilized with Flow Cytometry Perm Buffer (PF00011-C).