

For Research Use Only

# CoraLite®594-conjugated Cytokeratin 5 Polyclonal antibody

Catalog Number:CL594-28506



## Basic Information

**Catalog Number:**

CL594-28506

**Size:**

100ul , Concentration: 1000 ug/ml by  
Nanodrop;

**Source:**

Rabbit

**Isotype:**

IgG

**Immunogen Catalog Number:**

AG25436

**GenBank Accession Number:**

BC024292

**GeneID (NCBI):**

3852

**UNIPROT ID:**

P13647

**Full Name:**

keratin 5

**Calculated MW:**

590 aa, 62 kDa

**Observed MW:**

62 kDa

**Purification Method:**

Antigen affinity purification

**Recommended Dilutions:**

IF/ICC 1:50-1:500

**Excitation/Emission maxima  
wavelengths:**

588 nm / 604 nm

## Applications

**Tested Applications:**

IF/ICC

**Species Specificity:**

human, mouse, rat

**Positive Controls:**

IF/ICC : A431 cells,

## Background Information

Cytokeratin 5 (CK5) is a type II intermediate filament protein predominantly expressed in basal epithelial cells of various tissues, including the skin, breast, salivary glands, urinary tract, and upper aerodigestive tract. It is commonly found in specialized cell types such as squamous cells, basal cells, and myoepithelial cells. CK5 forms heterodimers with cytokeratin 14 and plays a crucial role in providing structural support to epithelial cells.

## Storage

**Storage:**

Store at -20°C. Avoid exposure to light. Stable for one year after shipment.

**Storage Buffer:**

PBS with 50% Glycerol, 0.05% Proclin300, 0.5% BSA, pH 7.3.

Aliquoting is unnecessary for -20°C storage

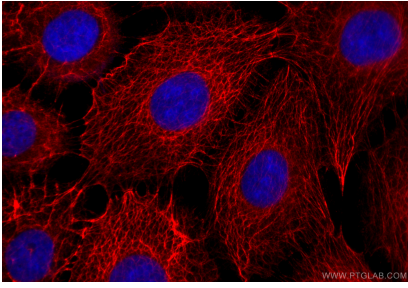
For technical support and original validation data for this product please contact:

T: 1 (888) 4PTGLAB (1-888-478-4522) (toll free  
in USA), or 1(312) 455-8498 (outside USA)

E: [proteintech@ptglab.com](mailto:proteintech@ptglab.com)  
W: [ptglab.com](http://ptglab.com)

**This product is exclusively available under Proteintech Group brand and is not available to purchase from any other manufacturer.**

## Selected Validation Data



Immunofluorescent analysis of (-20°C Methanol) fixed A431 cells using Coralite®594 Cytokeratin 5 antibody (CL594-28506) at dilution of 1:200.