

For Research Use Only

CoraLite®594-conjugated ARL13B Polyclonal antibody

Catalog Number:CL594-17711

Featured Product



Basic Information

Catalog Number:

CL594-17711

Size:

100ul , Concentration: 500 ug/ml by
Nanodrop;

Source:

Rabbit

Isotype:

IgG

Immunogen Catalog Number:

AG12015

GenBank Accession Number:

BC094725

GeneID (NCBI):

200894

UNIPROT ID:

Q35XY8

Full Name:

ADP-ribosylation factor-like 13B

Calculated MW:

48 kDa

Purification Method:

Antigen affinity purification

Recommended Dilutions:

IF/ICC 1:50-1:500

Excitation/Emission maxima
wavelengths:

588 nm / 604 nm

Applications

Tested Applications:

IF/ICC

Species Specificity:

human, mouse, rat, canine

Positive Controls:

IF/ICC : MDCK cells, hTERT-RPE1 cells

Background Information

ARL13B, also named as ARL2L1, is a small ciliary G protein of the Ras superfamily. Localized in the cilia, it is required for cilium biogenesis and sonic hedgehog signaling. Defects in ARL13B are the cause of Joubert syndrome (JS) which is an autosomal recessive disorder characterized by a distinctive cerebellar malformation (PMID: 19906870). CoraLite594-Conjugated ARL13B antibody can be used to mark the cilia(red). Ex: 593nm, Em: 614nm

Storage

Storage:

Store at -20°C. Avoid exposure to light. Stable for one year after shipment.

Storage Buffer:

PBS with 50% Glycerol, 0.05% Proclin300, 0.5% BSA, pH 7.3.

Aliquoting is unnecessary for -20°C storage

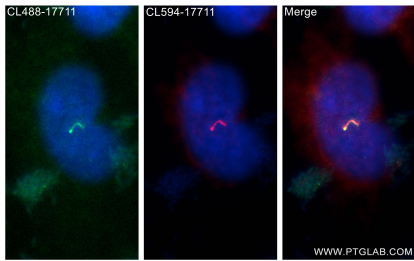
For technical support and original validation data for this product please contact:

T: 1 (888) 4PTGLAB (1-888-478-4522) (toll free
in USA), or 1(312) 455-8498 (outside USA)

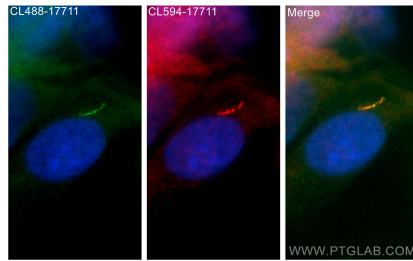
E: proteintech@ptglab.com
W: ptglab.com

This product is exclusively available under Proteintech Group brand and is not available to purchase from any other manufacturer.

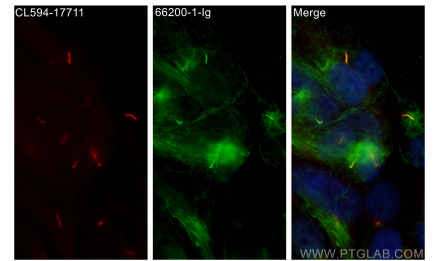
Selected Validation Data



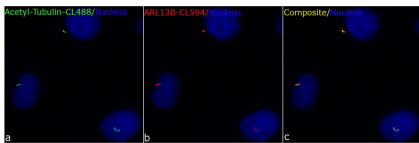
Immunofluorescent analysis of (4% PFA) fixed MDCK cells using CoraLite®594 ARL13B antibody (CL594-17711) at dilution of 1:200.



Immunofluorescent analysis of (4% PFA) fixed MDCK cells using CoraLite®594 ARL13B antibody (CL594-17711) at dilution of 1:200.



Immunofluorescent analysis of (4% PFA) fixed hTERT-RPE1 cells using CoraLite®594 ARL13B antibody (CL594-17711) at dilution of 1:200, acetylated Tubulin(Lys40) antibody (66200-1-Ig, Clone: 7E5H8, green).



Immunofluorescent analysis of (4% PFA) fixed MDCK cells using CL594-17711 (ARL13B antibody) at dilution of 1:50. Cells were co-stained with CL488-66200 (acetylated Tubulin(Lys40) antibody).