

For Research Use Only

# CoraLite®594-conjugated Desmin Polyclonal antibody

Catalog Number:CL594-16520

Featured Product



## Basic Information

Catalog Number:

CL594-16520

Size:

100ul , Concentration: 1000 ug/ml by Nanodrop;

Source:

Rabbit

Isotype:

IgG

Immunogen Catalog Number:

AG9742

GenBank Accession Number:

BC032116

GeneID (NCBI):

1674

UNIPROT ID:

P17661

Full Name:

desmin

Calculated MW:

470 aa, 54 kDa

Observed MW:

52-53 kDa

Purification Method:

Antigen affinity purification

Recommended Dilutions:

IF-P 1:50-1:500

Excitation/Emission maxima wavelengths:

588 nm / 604 nm

## Applications

Tested Applications:

IF-P, FC (Intra)

Species Specificity:

human, mouse, rat

Positive Controls:

IF-P : mouse heart tissue,

## Background Information

Desmin is the main intermediate filament protein in skeletal and cardiac muscle cells and is essential for both the structural integrity and the survival of muscle cells. As an abundant muscle-specific protein, desmin has been widely used as a marker of muscle derived tumors. Anti-desmin is also valuable in the differential diagnosis of tumors of uncertain origin.

## Storage

Storage:

Store at -20°C. Avoid exposure to light. Stable for one year after shipment.

Storage Buffer:

PBS with 50% Glycerol, 0.05% Proclin300, 0.5% BSA, pH 7.3.

Aliquoting is unnecessary for -20°C storage

For technical support and original validation data for this product please contact:

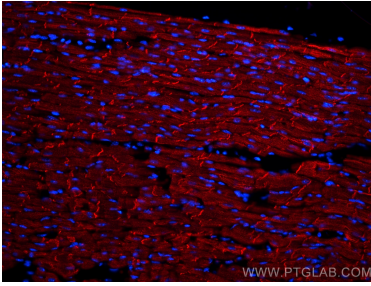
T: 1 (888) 4PTGLAB (1-888-478-4522) (toll free in USA), or 1(312) 455-8498 (outside USA)

E: [proteintech@ptglab.com](mailto:proteintech@ptglab.com)

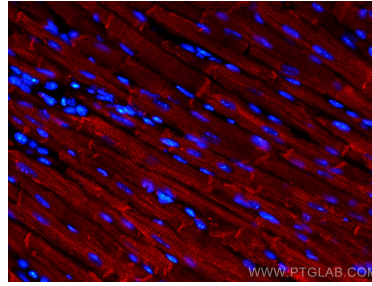
W: [ptglab.com](http://ptglab.com)

This product is exclusively available under Proteintech Group brand and is not available to purchase from any other manufacturer.

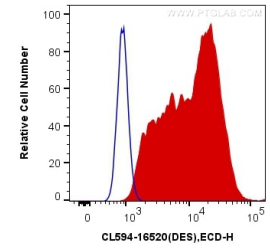
## Selected Validation Data



Immunofluorescent analysis of (4% PFA) fixed mouse heart tissue using CoraLite@594 Desmin antibody (CL594-16520) at dilution of 1:200.



Immunofluorescent analysis of (4% PFA) fixed mouse heart tissue using CoraLite@594 Desmin antibody (CL594-16520) at dilution of 1:200.



$1 \times 10^6$  C2C12 cells were intracellularly stained with 0.4  $\mu$ g CoraLite@594 Anti-Human Desmin (CL594-16520) (red), or 0.4  $\mu$ g Control Antibody. Cells were fixed with 4% PFA and permeabilized with Flow Cytometry Perm Buffer (PF00011-C).